

# PK1IP rabbit pAb

Cat No.:ES10732

For research use only

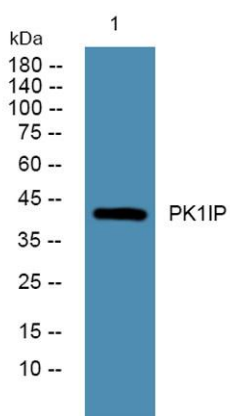
## Overview

Product Name	PK1IP rabbit pAb
Host species	Rabbit
Applications	WB;ELISA
Species Cross-Reactivity	Human;Rat;Mouse;
Recommended dilutions	WB 1:500-2000 ELISA 1:5000-20000
Immunogen	Synthesized peptide derived from part region of human protein
Specificity	PK1IP Polyclonal Antibody detects endogenous levels of protein.
Formulation	Liquid in PBS containing 50% glycerol, 0.5% BSA and 0.02% sodium azide.
Storage	Store at -20°C. Avoid repeated freeze-thaw cycles.
Protein Name	p21-activated protein kinase-interacting protein 1 (PAK/PLC-interacting protein 1) (hPIP1) (PAK1-interacting protein 1) (WD repeat-containing protein 84)
Gene Name	PAK1IP1 PIP1 WDR84
Cellular localization	Nucleus, nucleolus .
Purification	The antibody was affinity-purified from rabbit antiserum by affinity-chromatography using epitope-specific immunogen.
Clonality	Polyclonal
Concentration	1 mg/ml
Observed band	43kD
Human Gene ID	55003
Human Swiss-Prot Number	Q9NWT1
Alternative Names	
Background	function:Negatively regulates the PAK1 kinase. PAK1 is a member of the PAK kinase family, which have been shown to play a positive role in the regulation of signaling pathways involving MAPK8 and RELA. PAK1 exists as an inactive homodimer, which is activated by binding of small GTPases such as CDC42





to an N-terminal regulatory domain. PAK1IP1 also binds to the N-terminus of PAK1, and inhibits the specific activation of PAK1 by CDC42.,similarity:Contains 5 WD repeats.,subunit:Interacts with PAK1.,tissue specificity:Expressed in brain, colon, heart, kidney, liver, lung, muscle, peripheral blood leukocytes, placenta, small intestine, spleen and thymus.,



Western blot analysis of lysates from K562 cells, primary antibody was diluted at 1:1000, 4°over night

