



Cleaved-Plasminogen HC A short form (V98) rabbit pAb

Cat No.:ES1073

For research use only

Overview

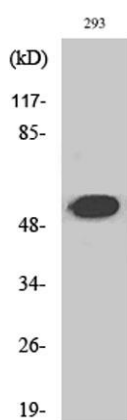
Product Name	Cleaved-Plasminogen HC A short form (V98) rabbit pAb
Host species	Rabbit
Applications	WB;ELISA
Species Cross-Reactivity	Human;Mouse;Rat
Recommended dilutions	Western Blot: 1/500 - 1/2000. ELISA: 1/10000. Not yet tested in other applications.
Immunogen	The antiserum was produced against synthesized peptide derived from human PLMN. AA range:79-128
Specificity	Cleaved-Plasminogen HC A short form (V98) Polyclonal Antibody detects endogenous levels of fragment of activated Plasminogen HC A short form protein resulting from cleavage adjacent to V98.
Formulation	Liquid in PBS containing 50% glycerol, 0.5% BSA and 0.02% sodium azide.
Storage	Store at -20°C. Avoid repeated freeze-thaw cycles.
Protein Name	Plasminogen
Gene Name	PLG
Cellular localization	Secreted . Locates to the cell surface where it is proteolytically cleaved to produce the active plasmin. Interaction with HRG tethers it to the cell surface.
Purification	The antibody was affinity-purified from rabbit antiserum by affinity-chromatography using epitope-specific immunogen.
Clonality	Polyclonal
Concentration	1 mg/ml
Observed band	54kD
Human Gene ID	5340
Human Swiss-Prot Number	P00747
Alternative Names	PLG; Plasminogen





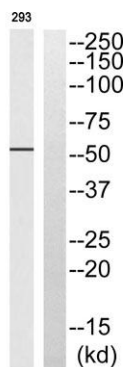
Background

The protein encoded by this gene is a secreted blood zymogen that is activated by proteolysis and converted to plasmin and angiostatin. Plasmin dissolves fibrin in blood clots and is an important protease in many other cellular processes while angiostatin inhibits angiogenesis. Defects in this gene are likely a cause of thrombophilia and ligneous conjunctivitis. Two transcript variants encoding different isoforms have been found for this gene.[provided by RefSeq, Dec 2009],



Western Blot analysis of various cells using Cleaved-Plasminogen HC A short form (V98) Polyclonal Antibody

PLMN
(heavy chain A short form,
Cleaved-Val98)



Western blot analysis of PLMN (heavy chain A short form, Cleaved-Val98) Antibody. The lane on the right is blocked with the PLMN (heavy chain A short form, Cleaved-Val98) peptide.

