



ITBP1 rabbit pAb

Cat No.:ES10718

For research use only

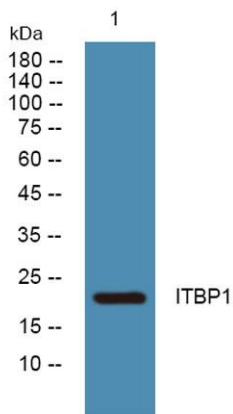
Overview

Product Name	ITBP1 rabbit pAb
Host species	Rabbit
Applications	WB;ELISA
Species Cross-Reactivity	Human;Mouse
Recommended dilutions	WB 1:500-2000 ELISA 1:5000-20000
Immunogen	Synthesized peptide derived from part region of human protein
Specificity	ITBP1 Polyclonal Antibody detects endogenous levels of protein.
Formulation	Liquid in PBS containing 50% glycerol, 0.5% BSA and 0.02% sodium azide.
Storage	Store at -20°C. Avoid repeated freeze-thaw cycles.
Protein Name	Integrin beta-1-binding protein 1 (Integrin cytoplasmic domain-associated protein 1) (ICAP-1)
Gene Name	ITGB1BP1 ICAP1
Cellular localization	Nucleus. Cytoplasm. Cytoplasm, cytoskeleton . Cell membrane . Cell projection, lamellipodium. Cell projection, ruffle. Nucleocytoplasmic shuttling protein; shuttles between nucleus and cytoplasm in a integrin-dependent manner; probably sequestered in the
Purification	The antibody was affinity-purified from rabbit antiserum by affinity-chromatography using epitope-specific immunogen.
Clonality	Polyclonal
Concentration	1 mg/ml
Observed band	22kD
Human Gene ID	9270
Human Swiss-Prot Number	O14713
Alternative Names	
Background	The cytoplasmic domains of integrins are essential for cell adhesion. The protein encoded by this gene binds to the beta1 integrin cytoplasmic domain. The





interaction between this protein and beta1 integrin is highly specific. Two isoforms of this protein are derived from alternatively spliced transcripts. The shorter form of this protein does not interact with the beta1 integrin cytoplasmic domain. The longer form is a phosphoprotein and the extent of its phosphorylation is regulated by the cell-matrix interaction, suggesting an important role of this protein during integrin-dependent cell adhesion. Several transcript variants, some protein-coding and some non-protein coding, have been found for this gene. [provided by RefSeq, Jan 2016],



Western blot analysis of lysates from K562 cells, primary antibody was diluted at 1:1000, 4° over night

