



# IGFL2 rabbit pAb

Cat No.:ES10709

For research use only

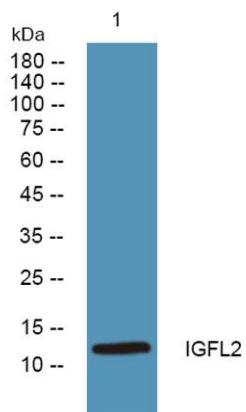
## Overview

|                                 |   |
|---------------------------------|---|
| <b>Product Name</b>             | IGFL2 rabbit pAb  |
| <b>Host species</b>             | Rabbit  |
| <b>Applications</b>             | WB;ELISA  |
| <b>Species Cross-Reactivity</b> | Human;Rat;Mouse;  |
| <b>Recommended dilutions</b>    | WB 1:500-2000 ELISA 1:5000-20000  |
| <b>Immunogen</b>                | Synthesized peptide derived from part region of human protein AA range: 1-50  |
| <b>Specificity</b>              | IGFL2 Polyclonal Antibody detects endogenous levels of protein.   |
| <b>Formulation</b>              | Liquid in PBS containing 50% glycerol, 0.5% BSA and 0.02% sodium azide.   |
| <b>Storage</b>                  | Store at -20°C. Avoid repeated freeze-thaw cycles.  |
| <b>Protein Name</b>             | Insulin growth factor-like family member 2  |
| <b>Gene Name</b>                | IGFL2 UNQ645/PRO1275  |
| <b>Cellular localization</b>    | Secreted .  |
| <b>Purification</b>             | The antibody was affinity-purified from rabbit antiserum by affinity-chromatography using epitope-specific immunogen.   |
| <b>Clonality</b>                | Polyclonal  |
| <b>Concentration</b>            | 1 mg/ml   |
| <b>Observed band</b>            | 13kD  |
| <b>Human Gene ID</b>            | 147920  |
| <b>Human Swiss-Prot Number</b>  | Q6UWQ7  |
| <b>Alternative Names</b>        |   |
| <b>Background</b>               | IGF like family member 2(IGFL2) Homo sapiens IGFL2 belongs to the insulin-like growth factor (IGF; see MIM 147440) family of signaling molecules that play critical roles in cellular energy metabolism and in growth and development, especially prenatal growth (Emtage et al., 2006 [PubMed 16890402]).[supplied by OMIM, Mar 2008], |





**ELK Biotechnology**



Western blot analysis of lysates from SH-SY5Y cells,  
primary antibody was diluted at 1:1000, 4° over night



+86-27-59760950

[ELKbio@ELKbiotech.com](mailto:ELKbio@ELKbiotech.com)

[www.elkbiotech.com](http://www.elkbiotech.com)

23-2, No.388 Gaoxin 2nd Road, Wuhan East Lake Hi-tech Development Zone, Hubei, P.R.C.