



HSPB3 rabbit pAb

Cat No.:ES10697

For research use only

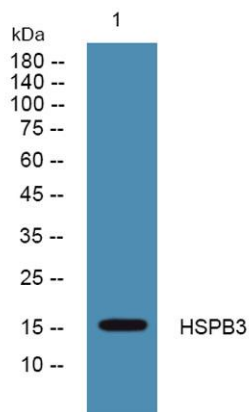
Overview

Product Name	HSPB3 rabbit pAb
Host species	Rabbit
Applications	WB;ELISA
Species Cross-Reactivity	Human;Rat;Mouse;
Recommended dilutions	WB 1:500-2000 ELISA 1:5000-20000
Immunogen	Synthesized peptide derived from human protein . at AA range: 30-110
Specificity	HSPB3 Polyclonal Antibody detects endogenous levels of protein.
Formulation	Liquid in PBS containing 50% glycerol, 0.5% BSA and 0.02% sodium azide.
Storage	Store at -20°C. Avoid repeated freeze-thaw cycles.
Protein Name	Heat shock protein beta-3 (HspB3) (Heat shock 17 kDa protein) (HSP 17) (Protein 3)
Gene Name	HSPB3 HSP27 HSPL27
Cellular localization	Cytoplasm . Nucleus . Translocates to nuclear foci during heat shock.
Purification	The antibody was affinity-purified from rabbit antiserum by affinity-chromatography using epitope-specific immunogen.
Clonality	Polyclonal
Concentration	1 mg/ml
Observed band	16kD
Human Gene ID	8988
Human Swiss-Prot Number	Q12988
Alternative Names	
Background	This gene encodes a muscle-specific small heat shock protein. A mutation in this gene is the cause of autosomal dominant distal hereditary motor neuropathy type 2C.[provided by RefSeq, Sep 2010],





ELK Biotechnology



Western blot analysis of lysates from PC12 cells, primary antibody was diluted at 1:1000, 4° over night



+86-27-59760950

ELKbio@ELKbiotech.com

www.elkbiotech.com

23-2, No.388 Gaoxin 2nd Road, Wuhan East Lake Hi-tech Development Zone, Hubei, P.R.C