



# DEDD rabbit pAb

Cat No.:ES10681

For research use only

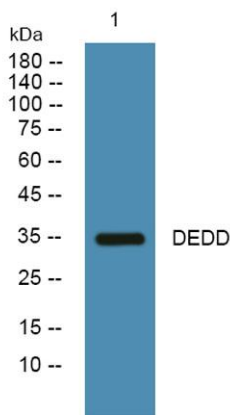
## Overview

<b>Product Name</b>	DEDD rabbit pAb
<b>Host species</b>	Rabbit
<b>Applications</b>	WB;ELISA
<b>Species Cross-Reactivity</b>	Human;Mouse;Rat
<b>Recommended dilutions</b>	WB 1:500-2000 ELISA 1:5000-20000
<b>Immunogen</b>	Synthesized peptide derived from human protein . at AA range: 90-170
<b>Specificity</b>	DEDD Polyclonal Antibody detects endogenous levels of protein.
<b>Formulation</b>	Liquid in PBS containing 50% glycerol, 0.5% BSA and 0.02% sodium azide.
<b>Storage</b>	Store at -20°C. Avoid repeated freeze-thaw cycles.
<b>Protein Name</b>	Death effector domain-containing protein (DEDPro1) (Death effector domain-containing testicular molecule) (FLDED-1)
<b>Gene Name</b>	DEDD DEDPRO1 DEFT KE05
<b>Cellular localization</b>	Cytoplasm. Nucleus, nucleolus . Translocated to the nucleus during CD95-mediated apoptosis where it is localized in the nucleoli (By similarity). Following apoptosis induction, the mono and/or diubiquitination form increases and forms filamentous structur
<b>Purification</b>	The antibody was affinity-purified from rabbit antiserum by affinity-chromatography using epitope-specific immunogen.
<b>Clonality</b>	Polyclonal
<b>Concentration</b>	1 mg/ml
<b>Observed band</b>	34kD
<b>Human Gene ID</b>	9191
<b>Human Swiss-Prot Number</b>	O75618
<b>Alternative Names</b>	
<b>Background</b>	This gene encodes a protein that contains a death effector domain (DED). DED is a protein-protein





interaction domain shared by adaptors, regulators and executors of the programmed cell death pathway. Overexpression of this gene was shown to induce weak apoptosis. Upon stimulation, this protein was found to translocate from cytoplasm to nucleus and colocalize with UBTF, a basal factor required for RNA polymerase I transcription, in the nucleolus. At least three transcript variants encoding the same protein have been found for this gene. [provided by RefSeq, Jul 2008],



Western blot analysis of lysates from SH-SY5Y cells,  
primary antibody was diluted at 1:1000, 4° over night

