

CCBE1 rabbit pAb

Cat No.:ES10676

For research use only

Overview

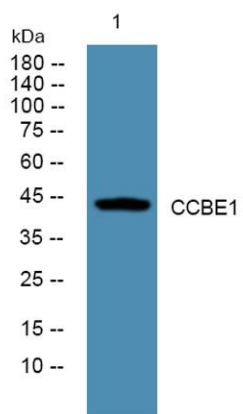
Product Name	CCBE1 rabbit pAb
Host species	Rabbit
Applications	WB;ELISA
Species Cross-Reactivity	Human;Rat;Mouse;
Recommended dilutions	WB 1:500-2000 ELISA 1:5000-20000
Immunogen	Synthesized peptide derived from human protein . at AA range: 120-200
Specificity	CCBE1 Polyclonal Antibody detects endogenous levels of protein.
Formulation	Liquid in PBS containing 50% glycerol, 0.5% BSA and 0.02% sodium azide.
Storage	Store at -20°C. Avoid repeated freeze-thaw cycles.
Protein Name	Collagen and calcium-binding EGF domain-containing protein 1 (Full of fluid protein homolog)
Gene Name	CCBE1 KIAA1983 UNQ1921/PRO4395
Cellular localization	Secreted .
Purification	The antibody was affinity-purified from rabbit antiserum by affinity-chromatography using epitope-specific immunogen.
Clonality	Polyclonal
Concentration	1 mg/ml
Observed band	44kD
Human Gene ID	147372
Human Swiss-Prot Number	Q6UXH8
Alternative Names	
Background	This gene is thought to function in extracellular matrix remodeling and migration. It is predominantly expressed in the ovary, but down regulated in ovarian cancer cell lines and primary carcinomas, suggesting its role as a tumour suppressor. Mutations in this gene have been associated with Hennekam





ELK Biotechnology

lymphangiectasia-lymphedema syndrome, a
generalized lymphatic dysplasia in humans.
[provided by RefSeq, Mar 2010],



Western blot analysis of lysates from A431 cells, primary
antibody was diluted at 1:1000, 4°over night



+86-27-59760950

ELKbio@ELKbiotech.com

www.elkbiotech.com

23-2, No.388 Gaoxin 2nd Road,Wuhan East Lake Hi-tech Development Zone, Hubei , P.R.C