



DUS26 rabbit pAb

Cat No.:ES10640

For research use only

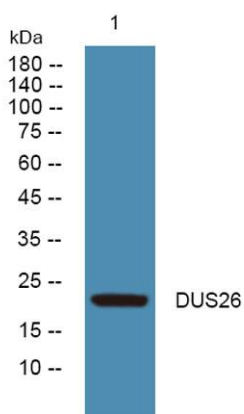
Overview

| | |
|---------------------------------|--|
| Product Name | DUS26 rabbit pAb |
| Host species | Rabbit |
| Applications | WB;ELISA |
| Species Cross-Reactivity | Human;Mouse;Rat |
| Recommended dilutions | WB 1:500-2000 ELISA 1:5000-20000 |
| Immunogen | Synthesized peptide derived from human protein . at AA range: 130-210 |
| Specificity | DUS26 Polyclonal Antibody detects endogenous levels of protein. |
| Formulation | Liquid in PBS containing 50% glycerol, 0.5% BSA and 0.02% sodium azide. |
| Storage | Store at -20°C. Avoid repeated freeze-thaw cycles. |
| Protein Name | Dual specificity protein phosphatase 26 (EC 3.1.3.16) (EC 3.1.3.48) (Dual specificity phosphatase SKRP3) (Low-molecular-mass dual-specificity phosphatase 4) (DSP-4) (LDP-4) (Mitogen-activated protein |
| Gene Name | DUSP26 DUSP24 LDP4 MKP8 NATA1 SKRP3 |
| Cellular localization | Cytoplasm. Nucleus. Golgi apparatus. |
| Purification | The antibody was affinity-purified from rabbit antiserum by affinity-chromatography using epitope-specific immunogen. |
| Clonality | Polyclonal |
| Concentration | 1 mg/ml |
| Observed band | 23kD |
| Human Gene ID | 78986 |
| Human Swiss-Prot Number | Q9BV47 |
| Alternative Names | |
| Background | This gene encodes a member of the tyrosine phosphatase family of proteins and exhibits dual specificity by dephosphorylating tyrosine as well as serine and threonine residues. This gene has been described as both a tumor suppressor and an oncogene depending on the cellular context. This |





protein may regulate neuronal proliferation and has been implicated in the progression of glioblastoma through its ability to dephosphorylate the p53 tumor suppressor. Alternative splicing results in multiple transcript variants. [provided by RefSeq, Feb 2015],



Western blot analysis of lysates from SH-SY5Y cells, primary antibody was diluted at 1:1000, 4° over night

