



T22D3 rabbit pAb

Cat No.:ES10634

For research use only

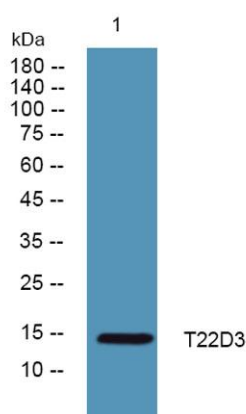
Overview

Product Name	T22D3 rabbit pAb
Host species	Rabbit
Applications	WB;ELISA
Species Cross-Reactivity	Human;Rat;Mouse;
Recommended dilutions	WB 1:500-2000 ELISA 1:5000-20000
Immunogen	Synthesized peptide derived from part region of human protein
Specificity	T22D3 Polyclonal Antibody detects endogenous levels of protein.
Formulation	Liquid in PBS containing 50% glycerol, 0.5% BSA and 0.02% sodium azide.
Storage	Store at -20°C. Avoid repeated freeze-thaw cycles.
Protein Name	TSC22 domain family protein 3 (DSIP-immunoreactive peptide) (Protein DIP) (hDIP) (Delta sleep-inducing peptide immunoreactor) (Glucocorticoid-induced leucine zipper protein) (GILZ) (TSC-22-like protei
Gene Name	TSC22D3 DSIPI GILZ
Cellular localization	[Isoform 1]: Cytoplasm . Nucleus . Localization depends on differentiation status of myoblasts. In undifferentiated myoblasts, isoform 1 localizes to the cytoplasm, but in differentiating myoblasts, isoform 1 is localized to the nucleus (By similarity). .
Purification	The antibody was affinity-purified from rabbit antiserum by affinity-chromatography using epitope-specific immunogen.
Clonality	Polyclonal
Concentration	1 mg/ml
Observed band	14kD
Human Gene ID	1831
Human Swiss-Prot Number	Q99576
Alternative Names	
Background	This gene encodes the anti-inflammatory protein





glucocorticoid (GC)-induced leucine zipper. Expression of this gene stimulated by glucocorticoids and interleukin 10 and it appears to play a key role in the anti-inflammatory and immunosuppressive effects of this steroid. This protein has also been shown to inhibit pro-inflammatory molecules including nuclear factor κ B. Alternate splicing results in multiple transcript variants. [provided by RefSeq, Jan 2016],



Western blot analysis of lysates from K562 cells, primary antibody was diluted at 1:1000, 4° over night

