

# DMRTB rabbit pAb

Cat No.:ES10625

For research use only

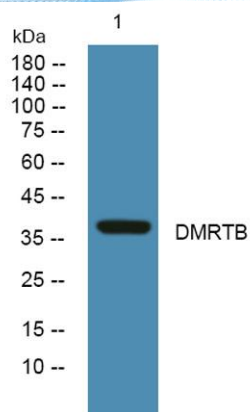
## Overview

|                          |   |
|--------------------------|---|
| Product Name             | DMRTB rabbit pAb  |
| Host species             | Rabbit  |
| Applications             | WB;ELISA  |
| Species Cross-Reactivity | Human;Mouse   |
| Recommended dilutions    | WB 1:500-2000 ELISA 1:5000-20000  |
| Immunogen                | Synthesized peptide derived from human protein .<br>at AA range: 270-350  |
| Specificity              | DMRTB Polyclonal Antibody detects endogenous<br>levels of protein.  |
| Formulation              | Liquid in PBS containing 50% glycerol, 0.5% BSA and<br>0.02% sodium azide.  |
| Storage                  | Store at -20°C. Avoid repeated freeze-thaw cycles.  |
| Protein Name             | Doublesex- and mab-3-related transcription factor<br>B1   |
| Gene Name                | DMRTB1  |
| Cellular localization    | Nucleus .   |
| Purification             | The antibody was affinity-purified from rabbit<br>antiserum by affinity-chromatography using<br>epitope-specific immunogen. |
| Clonality                | Polyclonal  |
| Concentration            | 1 mg/ml   |
| Observed band            | 37kD  |
| Human Gene ID            | 63948   |
| Human Swiss-Prot Number  | Q96MA1  |
| Alternative Names        |   |
| Background               | similarity:Belongs to the DMRT<br>family.,similarity:Contains 1 DM DNA-binding<br>domain.,tissue specificity:Testis.,       |





**ELK Biotechnology**



Western blot analysis of lysates from SW480 cells, primary antibody was diluted at 1:1000, 4° over night



+86-27-59760950

ELKbio@ELKbiotech.com

[www.elkbiotech.com](http://www.elkbiotech.com)

23-2, No.388 Gaoxin 2nd Road, Wuhan East Lake Hi-tech Development Zone, Hubei, P.R.C.