



ASPM rabbit pAb

Cat No.:ES10611

For research use only

Overview

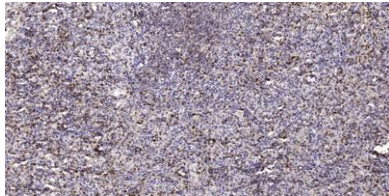
Product Name	ASPM rabbit pAb
Host species	Rabbit
Applications	IHC;IF
Species Cross-Reactivity	Human;Rat;Mouse;
Recommended dilutions	IHC-p 1:50-300
Immunogen	Synthesized peptide derived from human protein . at AA range: 1230-1310
Specificity	ASPM Polyclonal Antibody detects endogenous levels of protein.
Formulation	Liquid in PBS containing 50% glycerol, 0.5% BSA and 0.02% sodium azide.
Storage	Store at -20°C. Avoid repeated freeze-thaw cycles.
Protein Name	Abnormal spindle-like microcephaly-associated protein (Abnormal spindle protein homolog) (Asp homolog)
Gene Name	ASPM MCPH5
Cellular localization	Cytoplasm . Cytoplasm, cytoskeleton, spindle . Nucleus . The nuclear-cytoplasmic distribution could be regulated by the availability of calmodulin (By similarity). Localizes to spindle poles during mitosis (PubMed:19690332). Associates with microtubule mi
Purification	The antibody was affinity-purified from rabbit antiserum by affinity-chromatography using epitope-specific immunogen.
Clonality	Polyclonal
Concentration	1 mg/ml
Observed band	382kD
Human Gene ID	259266
Human Swiss-Prot Number	Q8IZT6
Alternative Names	
Background	This gene is the human ortholog of the Drosophila melanogaster 'abnormal spindle' gene (asp), which





is essential for normal mitotic spindle function in embryonic neuroblasts. Studies in mouse also suggest a role of this gene in mitotic spindle regulation, with a preferential role in regulating neurogenesis. Mutations in this gene are associated with microcephaly primary type 5. Multiple transcript variants encoding different isoforms have been found for this gene.[provided by RefSeq, May 2011],

Immunohistochemical analysis of paraffin-embedded human spleen tissue. 1,primary Antibody was diluted at 1:200(4° overnight). 2, Sodium citrate pH 6.0 was used for antigen retrieval(>98°C,20min). 3,Secondary antibody was diluted at 1:200



Western Blot analysis of K-562 cell ,using primary antibody at 1:1000 dilution. Secondary antibody(catalog#:RS23920) was diluted at 1:10000

