



MKX rabbit pAb

Cat No.:ES10606

For research use only

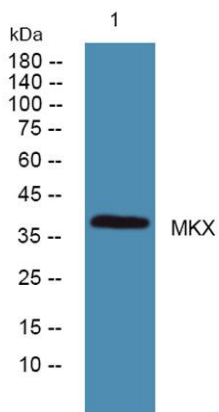
Overview

Product Name	MKX rabbit pAb
Host species	Rabbit
Applications	WB;ELISA
Species Cross-Reactivity	Human;Mouse
Recommended dilutions	WB 1:500-2000 ELISA 1:5000-20000
Immunogen	Synthesized peptide derived from human protein . at AA range: 250-330
Specificity	MKX Polyclonal Antibody detects endogenous levels of protein.
Formulation	Liquid in PBS containing 50% glycerol, 0.5% BSA and 0.02% sodium azide.
Storage	Store at -20°C. Avoid repeated freeze-thaw cycles.
Protein Name	Homeobox protein Mohawk
Gene Name	MKX C10orf48 IRXL1
Cellular localization	Nucleus .
Purification	The antibody was affinity-purified from rabbit antiserum by affinity-chromatography using epitope-specific immunogen.
Clonality	Polyclonal
Concentration	1 mg/ml
Observed band	38kD
Human Gene ID	283078
Human Swiss-Prot Number	Q8IYA7
Alternative Names	
Background	The protein encoded by this gene is an IRX family-related homeobox protein that may play a role in cell adhesion. Studies in mice suggest that this protein may be a regulator of tendon development. Two transcript variants encoding the same protein have been found for this gene.[provided by RefSeq, Jun 2011],





ELK Biotechnology



Western blot analysis of lysates from SH-SY5Y cells,
primary antibody was diluted at 1:1000, 4° over night



+86-27-59760950

ELKbio@ELKbiotech.com

www.elkbiotech.com

23-2, No.388 Gaoxin 2nd Road, Wuhan East Lake Hi-tech Development Zone, Hubei, P.R.C.