



FOG1 rabbit pAb

Cat No.:ES10602

For research use only

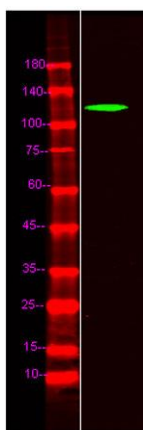
Overview

Product Name	FOG1 rabbit pAb
Host species	Rabbit
Applications	WB;ELISA
Species Cross-Reactivity	Human;Mouse
Recommended dilutions	WB 1:500-2000 ELISA 1:5000-20000
Immunogen	Synthesized peptide derived from human protein . at AA range: 620-700
Specificity	FOG1 Polyclonal Antibody detects endogenous levels of protein.
Formulation	Liquid in PBS containing 50% glycerol, 0.5% BSA and 0.02% sodium azide.
Storage	Store at -20°C. Avoid repeated freeze-thaw cycles.
Protein Name	Zinc finger protein ZFPM1 (Friend of GATA protein 1) (FOG-1) (Friend of GATA 1) (Zinc finger protein 89A) (Zinc finger protein multitype 1)
Gene Name	ZFPM1 FOG1 ZFN89A
Cellular localization	Nucleus .
Purification	The antibody was affinity-purified from rabbit antiserum by affinity-chromatography using epitope-specific immunogen.
Clonality	Polyclonal
Concentration	1 mg/ml
Observed band	110kD
Human Gene ID	161882
Human Swiss-Prot Number	Q8IX07
Alternative Names	
Background	domain:The CCHC-type zinc fingers 1, 5, 6 and 9 directly bind to GATA-type zinc fingers. The Tyr residue adjacent to the last Cys of the CCHC-type zinc finger is essential for the interaction with GATA-type zinc fingers.,function:Transcription regulator that plays an essential role in erythroid and megakaryocytic cell differentiation. Essential





cofactor that acts via the formation of a heterodimer with transcription factors of the GATA family GATA1, GATA2 and GATA3. Such heterodimer can both activate or repress transcriptional activity, depending on the cell and promoter context. The heterodimer formed with GATA proteins is essential to activate expression of genes such as NFE2, ITGA2B, alpha- and beta-globin, while it represses expression of KLF1. May be involved in regulation of some genes in gonads. May also be involved in cardiac development, in a non-redundant way with ZFPM2/FOG2.,PTM:Phosphorylated upon DNA damage, probably by ATM or ATR.,similarity:Belongs to the FOG (Friend of GATA) family.,similarity:Contains 4 C2H2-type zinc fingers.,similarity:Contains 5 C2HC-type zinc fingers.,subunit:Interacts with corepressor CTBP2; this interaction is however not essential for corepressor activity (By similarity). Interacts with the N-terminal zinc-finger of GATA1, GATA2 and probably GATA3.,tissue specificity:Mainly expressed in hematopoietic tissues. Also expressed in adult cerebellum, stomach, lymph node, liver and pancreas. Expressed in fetal heart, liver and spleen.,



Western Blot analysis of HeLa lysis, using primary antibody at 1:1000 dilution. Secondary antibody(catalog#:RS23920) was diluted at 1:10000

