



NUFP2 rabbit pAb

Cat No.:ES10595

For research use only

Overview

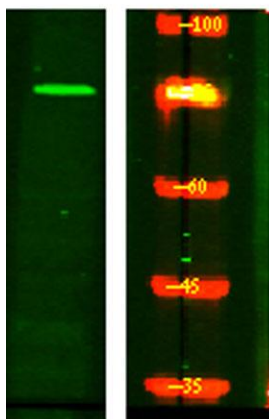
Product Name	NUFP2 rabbit pAb
Host species	Rabbit
Applications	WB;ELISA
Species Cross-Reactivity	Human;Mouse
Recommended dilutions	WB 1:500-2000 ELISA 1:5000-20000
Immunogen	Synthesized peptide derived from human protein . at AA range: 180-260
Specificity	NUFP2 Polyclonal Antibody detects endogenous levels of protein.
Formulation	Liquid in PBS containing 50% glycerol, 0.5% BSA and 0.02% sodium azide.
Storage	Store at -20°C. Avoid repeated freeze-thaw cycles.
Protein Name	Nuclear fragile X mental retardation-interacting protein 2 (82 kDa FMRP-interacting protein) (82-FIP) (Cell proliferation-inducing gene 1 protein) (FMRP-interacting protein 2)
Gene Name	NUFIP2 KIAA1321 PIG1
Cellular localization	Nucleus . Cytoplasm . Cytoplasm, Stress granule . Distribution is cell cycle-modulated, being cytoplasmic in the G2/M phase and accumulating in nucleus during the G1 phase (PubMed:12837692) . .
Purification	The antibody was affinity-purified from rabbit antiserum by affinity-chromatography using epitope-specific immunogen.
Clonality	Polyclonal
Concentration	1 mg/ml
Observed band	76kD
Human Gene ID	57532
Human Swiss-Prot Number	Q7Z417
Alternative Names	
Background	function:Binds RNA.,PTM:Phosphorylated upon DNA damage, probably by ATM or ATR.,subcellular location:Distribution is cell cycle-modulated, being





ELK Biotechnology

cytoplasmic in the G2/M phase and accumulating in nucleus during the G1 phase.,subunit:Interacts with FMRP.,



Western Blot analysis of HeLa lysis, using primary antibody at 1:1000 dilution. Secondary antibody(catalog#:RS23920) was diluted at 1:10000



+86-27-59760950

ELKbio@ELKbiotech.com

www.elkbiotech.com

23-2, No.388 Gaoxin 2nd Road,Wuhan East Lake Hi-tech Development Zone, Hubei , P.R.C