



GSAML rabbit pAb

Cat No.:ES10579

For research use only

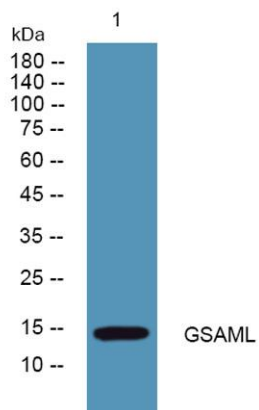
Overview

Product Name	GSAML rabbit pAb
Host species	Rabbit
Applications	WB;ELISA
Species Cross-Reactivity	Human;Rat;Mouse;
Recommended dilutions	WB 1:500-2000 ELISA 1:5000-20000
Immunogen	Synthesized peptide derived from human protein . at AA range: 10-90
Specificity	GSAML Polyclonal Antibody detects endogenous levels of protein.
Formulation	Liquid in PBS containing 50% glycerol, 0.5% BSA and 0.02% sodium azide.
Storage	Store at -20°C. Avoid repeated freeze-thaw cycles.
Protein Name	Germinal center-associated signaling and motility-like protein
Gene Name	GCSAML C1orf150
Cellular localization	
Purification	The antibody was affinity-purified from rabbit antiserum by affinity-chromatography using epitope-specific immunogen.
Clonality	Polyclonal
Concentration	1 mg/ml
Observed band	14kD
Human Gene ID	148823
Human Swiss-Prot Number	Q5JQS6
Alternative Names	
Background	This gene encodes a protein thought to be a signaling molecule associated with germinal centers, the sites of proliferation and differentiation of mature B lymphocytes. Alternate splicing results in multiple transcript variants. [provided by RefSeq, Aug 2013],





ELK Biotechnology



Western blot analysis of lysates from 3T3 cells, primary antibody was diluted at 1:1000, 4° over night



+86-27-59760950

ELKbio@ELKbiotech.com

www.elkbiotech.com

23-2, No.388 Gaoxin 2nd Road, Wuhan East Lake Hi-tech Development Zone, Hubei, P.R.C