



# MAGAC rabbit pAb

Cat No.:ES10548

For research use only

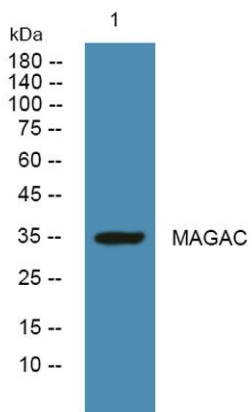
## Overview

<b>Product Name</b>	MAGAC rabbit pAb
<b>Host species</b>	Rabbit
<b>Applications</b>	WB;ELISA
<b>Species Cross-Reactivity</b>	Human;Rat;Mouse;
<b>Recommended dilutions</b>	WB 1:500-2000 ELISA 1:5000-20000
<b>Immunogen</b>	Synthesized peptide derived from human protein . at AA range: 40-120
<b>Specificity</b>	MAGAC Polyclonal Antibody detects endogenous levels of protein.
<b>Formulation</b>	Liquid in PBS containing 50% glycerol, 0.5% BSA and 0.02% sodium azide.
<b>Storage</b>	Store at -20°C. Avoid repeated freeze-thaw cycles.
<b>Protein Name</b>	Melanoma-associated antigen 12 (Cancer/testis antigen 1.12) (CT1.12) (MAGE-12 antigen) (MAGE12F antigen)
<b>Gene Name</b>	MAGEA12 MAGE12
<b>Cellular localization</b>	
<b>Purification</b>	The antibody was affinity-purified from rabbit antiserum by affinity-chromatography using epitope-specific immunogen.
<b>Clonality</b>	Polyclonal
<b>Concentration</b>	1 mg/ml
<b>Observed band</b>	34kD
<b>Human Gene ID</b>	4111
<b>Human Swiss-Prot Number</b>	P43365
<b>Alternative Names</b>	
<b>Background</b>	MAGE family member A12(MAGEA12) Homo sapiens This gene is closely related to several other genes clustered on chromosome X. These genes may be overexpressed in tumors. Multiple alternatively spliced variants encoding the same protein have been identified. [provided by RefSeq, Jun 2014],





**ELK Biotechnology**



Western blot analysis of lysates from DU145 cells, primary antibody was diluted at 1:1000, 4° over night



+86-27-59760950

ELKbio@ELKbiotech.com

www.elkbiotech.com

23-2, No.388 Gaoxin 2nd Road, Wuhan East Lake Hi-tech Development Zone, Hubei, P.R.C.