



CYLC2 rabbit pAb

Cat No.:ES10536

For research use only

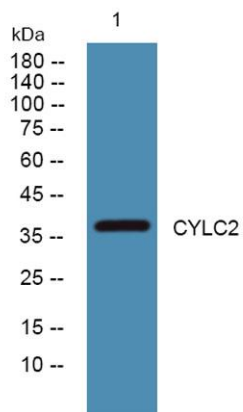
Overview

Product Name	CYLC2 rabbit pAb
Host species	Rabbit
Applications	WB;ELISA
Species Cross-Reactivity	Human;Rat;Mouse;
Recommended dilutions	WB 1:500-2000 ELISA 1:5000-20000
Immunogen	Synthesized peptide derived from human protein . at AA range: 280-360
Specificity	CYLC2 Polyclonal Antibody detects endogenous levels of protein.
Formulation	Liquid in PBS containing 50% glycerol, 0.5% BSA and 0.02% sodium azide.
Storage	Store at -20°C. Avoid repeated freeze-thaw cycles.
Protein Name	Cylicin-2 (Cylicin II) (Multiple-band polypeptide II)
Gene Name	CYLC2 CYL2
Cellular localization	Cytoplasm, cytoskeleton, perinuclear theca, calyx. Sperm head cytoskeletal structure.
Purification	The antibody was affinity-purified from rabbit antiserum by affinity-chromatography using epitope-specific immunogen.
Clonality	Polyclonal
Concentration	1 mg/ml
Observed band	38kD
Human Gene ID	1539
Human Swiss-Prot Number	Q14093
Alternative Names	
Background	Cylicin II (CYCL2) is specifically expressed in testis and is part of the cytoskeletal calyx of mammalian sperm heads. Cylicin II may play a role in the morphogenesis of the sperm head. [provided by RefSeq, Jul 2008],





ELK Biotechnology



Western blot analysis of lysates from KB cells, primary antibody was diluted at 1:1000, 4° over night



+86-27-59760950

ELKbio@ELKbiotech.com

www.elkbiotech.com

23-2, No.388 Gaoxin 2nd Road, Wuhan East Lake Hi-tech Development Zone, Hubei, P.R.C