



UBE2H rabbit pAb

Cat No.:ES10438

For research use only

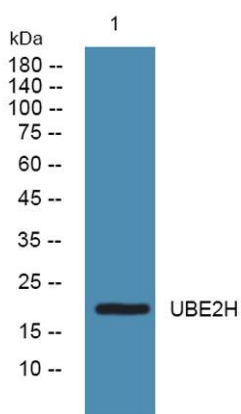
Overview

Product Name	UBE2H rabbit pAb
Host species	Rabbit
Applications	WB;ELISA
Species Cross-Reactivity	Human;Mouse
Recommended dilutions	WB 1:500-2000 ELISA 1:5000-20000
Immunogen	Synthesized peptide derived from part region of human protein
Specificity	UBE2H Polyclonal Antibody detects endogenous levels of protein.
Formulation	Liquid in PBS containing 50% glycerol, 0.5% BSA and 0.02% sodium azide.
Storage	Store at -20°C. Avoid repeated freeze-thaw cycles.
Protein Name	Ubiquitin-conjugating enzyme E2 H (EC 6.3.2.19) (UbcH2) (Ubiquitin carrier protein H) (Ubiquitin-conjugating enzyme E2-20K) (Ubiquitin-protein ligase H)
Gene Name	UBE2H
Cellular localization	cytoplasm,
Purification	The antibody was affinity-purified from rabbit antiserum by affinity-chromatography using epitope-specific immunogen.
Clonality	Polyclonal
Concentration	1 mg/ml
Observed band	20kD
Human Gene ID	7328
Human Swiss-Prot Number	P62256
Alternative Names	
Background	The modification of proteins with ubiquitin is an important cellular mechanism for targeting abnormal or short-lived proteins for degradation. Ubiquitination involves at least three classes of enzymes: ubiquitin-activating enzymes, or E1s, ubiquitin-conjugating enzymes, or E2s, and





ubiquitin-protein ligases, or E3s. This gene encodes a member of the E2 ubiquitin-conjugating enzyme family. The encoded protein sequence is 100% identical to the mouse homolog and 98% identical to the frog and zebrafish homologs. Three alternatively spliced transcript variants have been found for this gene and they encode distinct isoforms. [provided by RefSeq, Feb 2011],



Western blot analysis of lysates from KB cells, primary antibody was diluted at 1:1000, 4° over night

