



# TCF15 rabbit pAb

Cat No.:ES10371

For research use only

## Overview

<b>Product Name</b>	TCF15 rabbit pAb
<b>Host species</b>	Rabbit
<b>Applications</b>	WB;ELISA
<b>Species Cross-Reactivity</b>	Human;Mouse
<b>Recommended dilutions</b>	WB 1:500-2000 ELISA 1:5000-20000
<b>Immunogen</b>	Synthesized peptide derived from part region of human protein
<b>Specificity</b>	TCF15 Polyclonal Antibody detects endogenous levels of protein.
<b>Formulation</b>	Liquid in PBS containing 50% glycerol, 0.5% BSA and 0.02% sodium azide.
<b>Storage</b>	Store at -20°C. Avoid repeated freeze-thaw cycles.
<b>Protein Name</b>	Transcription factor 15 (TCF-15) (Class A basic helix-loop-helix protein 40) (bHLHa40) (Paraxis) (Protein bHLH-EC2)
<b>Gene Name</b>	TCF15 BHLHA40 BHLHEC2
<b>Cellular localization</b>	Nucleus .
<b>Purification</b>	The antibody was affinity-purified from rabbit antiserum by affinity-chromatography using epitope-specific immunogen.
<b>Clonality</b>	Polyclonal
<b>Concentration</b>	1 mg/ml
<b>Observed band</b>	21kD
<b>Human Gene ID</b>	6939
<b>Human Swiss-Prot Number</b>	Q12870
<b>Alternative Names</b>	
<b>Background</b>	transcription factor 15 (basic helix-loop-helix)(TCF15) Homo sapiens The protein encoded by this gene is found in the nucleus and may be involved in the early transcriptional regulation of patterning of the mesoderm. The encoded basic helix-loop-helix protein requires dimerization with another basic helix-loop-helix

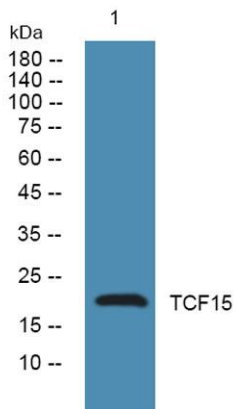




**ELK Biotechnology**

protein for efficient DNA binding. [provided by RefSeq, Jul 2008],

Western blot analysis of lysates from U2OS cells, primary antibody was diluted at 1:1000, 4° over night



+86-27-59760950

[ELKbio@ELKbiotech.com](mailto:ELKbio@ELKbiotech.com)

[www.elkbiotech.com](http://www.elkbiotech.com)

23-2, No.388 Gaoxin 2nd Road, Wuhan East Lake Hi-tech Development Zone, Hubei, P.R.C