



TPPC4 rabbit pAb

Cat No.:ES10363

For research use only

Overview

Product Name	TPPC4 rabbit pAb
Host species	Rabbit
Applications	WB;ELISA
Species Cross-Reactivity	Human;Rat;Mouse
Recommended dilutions	WB 1:500-2000 ELISA 1:5000-20000
Immunogen	Synthesized peptide derived from part region of human protein
Specificity	TPPC4 Polyclonal Antibody detects endogenous levels of protein.
Formulation	Liquid in PBS containing 50% glycerol, 0.5% BSA and 0.02% sodium azide.
Storage	Store at -20°C. Avoid repeated freeze-thaw cycles.
Protein Name	Trafficking protein particle complex subunit 4 (Hematopoietic stem/progenitor cell protein 172) (Synbindin) (TRS23 homolog)
Gene Name	TRAPPC4 SBDN CGI-104 HSPC172 PTD009
Cellular localization	Cell junction, synapse, postsynaptic cell membrane . Golgi apparatus membrane . Endoplasmic reticulum . Vesicle . Associated with postsynaptic membranes and in intracellular cisterns and vesicles (Golgi). .
Purification	The antibody was affinity-purified from rabbit antiserum by affinity-chromatography using epitope-specific immunogen.
Clonality	Polyclonal
Concentration	1 mg/ml
Observed band	24kD
Human Gene ID	51399
Human Swiss-Prot Number	Q9Y296
Alternative Names	
Background	function:May play a role in vesicular transport from endoplasmic reticulum to Golgi.,similarity:Belongs to the TRAPP small subunits family. TRAPPC4

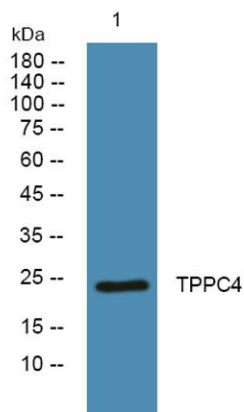




ELK Biotechnology

subfamily.,subunit:Part of the multisubunit TRAPP (transport protein particle) complex. Interacts with SDC2.,

Western blot analysis of lysates from U2OS cells, primary antibody was diluted at 1:1000, 4°over night



+86-27-59760950

ELKbio@ELKbiotech.com

www.elkbiotech.com

23-2, No.388 Gaoxin 2nd Road,Wuhan East Lake Hi-tech Development Zone, Hubei , P.R.C