



TPC2L rabbit pAb

Cat No.:ES10362

For research use only

Overview

Product Name	TPC2L rabbit pAb
Host species	Rabbit
Applications	WB;ELISA
Species Cross-Reactivity	Human;Rat;Mouse
Recommended dilutions	WB 1:500-2000 ELISA 1:5000-20000
Immunogen	Synthesized peptide derived from part region of human protein
Specificity	TPC2L Polyclonal Antibody detects endogenous levels of protein.
Formulation	Liquid in PBS containing 50% glycerol, 0.5% BSA and 0.02% sodium azide.
Storage	Store at -20°C. Avoid repeated freeze-thaw cycles.
Protein Name	Trafficking protein particle complex subunit 2-like protein
Gene Name	TRAPPC2L HSPC126
Cellular localization	Cytoplasm, perinuclear region . Endoplasmic reticulum . Golgi apparatus .
Purification	The antibody was affinity-purified from rabbit antiserum by affinity-chromatography using epitope-specific immunogen.
Clonality	Polyclonal
Concentration	1 mg/ml
Observed band	15kD
Human Gene ID	51693
Human Swiss-Prot Number	Q9UL33
Alternative Names	
Background	This gene encodes a protein that interacts with the tethering factor trafficking protein particle (TRAPP complex). TRAPP complexes mediate the contact between vesicles and target membranes, and thus, are involved in vesicle-mediated transport of proteins and lipids. The encoded protein is related to the X-linked trafficking protein particle complex 2.

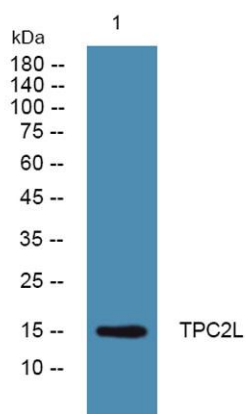




ELK Biotechnology

A related pseudogene is located on the X chromosome. Alternative splicing results in multiple transcript variants encoding different isoforms. [provided by RefSeq, Jan 2016],

Western blot analysis of lysates from SW480 cells, primary antibody was diluted at 1:1000, 4° over night



+86-27-59760950

ELKbio@ELKbiotech.com

www.elkbiotech.com

23-2, No.388 Gaoxin 2nd Road, Wuhan East Lake Hi-tech Development Zone, Hubei, P.R.C