



TM2D1 rabbit pAb

Cat No.:ES10359

For research use only

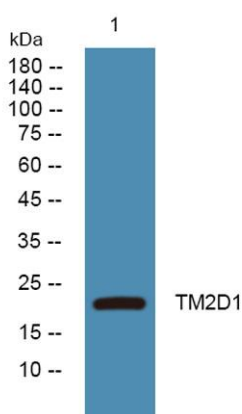
Overview

Product Name	TM2D1 rabbit pAb
Host species	Rabbit
Applications	WB;ELISA
Species Cross-Reactivity	Human;Mouse
Recommended dilutions	WB 1:500-2000 ELISA 1:5000-20000
Immunogen	Synthesized peptide derived from part region of human protein
Specificity	TM2D1 Polyclonal Antibody detects endogenous levels of protein.
Formulation	Liquid in PBS containing 50% glycerol, 0.5% BSA and 0.02% sodium azide.
Storage	Store at -20°C. Avoid repeated freeze-thaw cycles.
Protein Name	TM2 domain-containing protein 1 (Beta-amyloid-binding protein) (hBBP)
Gene Name	TM2D1 BBP
Cellular localization	Membrane ; Multi-pass membrane protein .
Purification	The antibody was affinity-purified from rabbit antiserum by affinity-chromatography using epitope-specific immunogen.
Clonality	Polyclonal
Concentration	1 mg/ml
Observed band	22kD
Human Gene ID	83941
Human Swiss-Prot Number	Q9BX74
Alternative Names	
Background	The protein encoded by this gene is a beta-amyloid peptide-binding protein. It contains a structural module related to that of the seven transmembrane domain G protein-coupled receptor superfamily and known to be important in heterotrimeric G protein activation. Beta-amyloid peptide has been established to be a causative factor in neuron death and the consequent diminution of cognitive abilities





observed in Alzheimer's disease. This protein may be a target of neurotoxic beta-amyloid peptide, and may mediate cellular vulnerability to beta-amyloid peptide toxicity through a G protein-regulated program of cell death. Several transcript variants have been found for this gene. [provided by RefSeq, Feb 2016],



Western blot analysis of lysates from SW480 cells, primary antibody was diluted at 1:1000, 4° over night

