



ZO1 rabbit pAb

Cat No.:ES10356

For research use only

Overview

Product Name	ZO1 rabbit pAb
Host species	Rabbit
Applications	WB;IF;ELISA
Species Cross-Reactivity	Human;Mouse
Recommended dilutions	WB 1:500-2000 IF 1:100-300 ELISA 1:5000-20000
Immunogen	Synthesized peptide derived from part region of human protein.AA1600-1700
Specificity	ZO1 Polyclonal Antibody detects endogenous levels of protein.
Formulation	Liquid in PBS containing 50% glycerol, 0.5% BSA and 0.02% sodium azide.
Storage	Store at -20°C. Avoid repeated freeze-thaw cycles.
Protein Name	Tight junction protein ZO-1 (Tight junction protein 1) (Zona occludens protein 1) (Zonula occludens protein 1)
Gene Name	TJP1 ZO1
Cellular localization	Cell membrane ; Peripheral membrane protein ; Cytoplasmic side . Cell junction, tight junction . Cell junction . Cell junction, gap junction. Cell projection, podosome . Moves from the cytoplasm to the cell membrane concurrently with cell-cell contact (Pu
Purification	The antibody was affinity-purified from rabbit antiserum by affinity-chromatography using epitope-specific immunogen.
Clonality	Polyclonal
Concentration	1 mg/ml
Observed band	192kD
Human Gene ID	7082
Human Swiss-Prot Number	Q07157
Alternative Names	
Background	This gene encodes a protein located on a cytoplasmic membrane surface of intercellular tight junctions. The encoded protein may be involved in

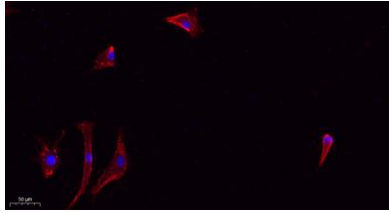




ELK Biotechnology

signal transduction at cell-cell junctions. Alternative splicing of this gene results in multiple transcript variants. [provided by RefSeq, Jul 2014],

Immunofluorescence analysis of A549. 1, primary Antibody(red) was diluted at 1:200(4°C overnight). 2, Goat Anti Rabbit IgG (H&L) - Alexa Fluor 594 Secondary antibody was diluted at 1:1000(room temperature, 50min).3, Picture B: DAPI(blue) 10min.



+86-27-59760950

ELKbio@ELKbiotech.com

www.elkbiotech.com

23-2, No.388 Gaoxin 2nd Road,Wuhan East Lake Hi-tech Development Zone, Hubei , P.R.C