



SYT7 rabbit pAb

Cat No.:ES10337

For research use only

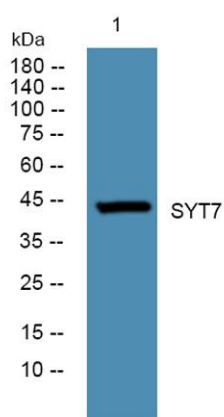
Overview

Product Name	SYT7 rabbit pAb
Host species	Rabbit
Applications	WB;ELISA
Species Cross-Reactivity	Human;Mouse
Recommended dilutions	WB 1:500-2000 ELISA 1:5000-20000
Immunogen	Synthesized peptide derived from part region of human protein
Specificity	SYT7 Polyclonal Antibody detects endogenous levels of protein.
Formulation	Liquid in PBS containing 50% glycerol, 0.5% BSA and 0.02% sodium azide.
Storage	Store at -20°C. Avoid repeated freeze-thaw cycles.
Protein Name	Synaptotagmin-7 (IPCA-7) (Prostate cancer-associated protein 7) (Synaptotagmin VII) (SytVII)
Gene Name	SYT7 PCANAP7
Cellular localization	Cell membrane ; Single-pass membrane protein . Cell junction, synapse, presynaptic cell membrane ; Single-pass membrane protein . Cytoplasmic vesicle, secretory vesicle, synaptic vesicle membrane ; Single-pass membrane protein . Lysosome membrane ; Single
Purification	The antibody was affinity-purified from rabbit antiserum by affinity-chromatography using epitope-specific immunogen.
Clonality	Polyclonal
Concentration	1 mg/ml
Observed band	44kD
Human Gene ID	9066
Human Swiss-Prot Number	O43581
Alternative Names	
Background	This gene is a member of the synaptotagmin gene family and encodes a protein similar to other family





members that mediate calcium-dependent regulation of membrane trafficking in synaptic transmission. A similar protein in rodents mediates hormone secretion and lysosome exocytosis. In humans, expression of this gene has been associated with prostate cancer. Alternatively spliced transcript variants encoding multiple isoforms have been observed for this gene. [provided by RefSeq, Oct 2011],



Western blot analysis of lysates from KB cells, primary antibody was diluted at 1:1000, 4° over night

