



SYT4 rabbit pAb

Cat No.:ES10335

For research use only

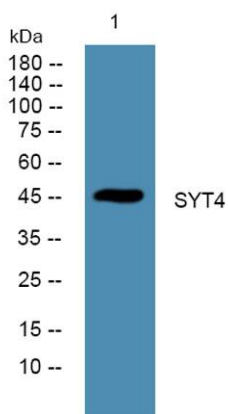
Overview

Product Name	SYT4 rabbit pAb
Host species	Rabbit
Applications	WB;ELISA
Species Cross-Reactivity	Human;Rat;Mouse;
Recommended dilutions	WB 1:500-2000 ELISA 1:5000-20000
Immunogen	Synthesized peptide derived from part region of human protein
Specificity	SYT4 Polyclonal Antibody detects endogenous levels of protein.
Formulation	Liquid in PBS containing 50% glycerol, 0.5% BSA and 0.02% sodium azide.
Storage	Store at -20°C. Avoid repeated freeze-thaw cycles.
Protein Name	Synaptotagmin-4 (Synaptotagmin IV) (SytIV)
Gene Name	SYT4 KIAA1342
Cellular localization	Cytoplasmic vesicle, secretory vesicle, neuronal dense core vesicle membrane ; Single-pass membrane protein .
Purification	The antibody was affinity-purified from rabbit antiserum by affinity-chromatography using epitope-specific immunogen.
Clonality	Polyclonal
Concentration	1 mg/ml
Observed band	46kD
Human Gene ID	6860
Human Swiss-Prot Number	Q9H2B2
Alternative Names	
Background	cofactor: Binds 3 calcium ions per subunit. The ions are bound to the C2 domains.,function: May be involved in Ca(2+)-dependent exocytosis of secretory vesicles through Ca(2+) and phospholipid binding to the C2 domain or may serve as Ca(2+) sensors in the process of vesicular trafficking and exocytosis.,similarity: Belongs to the synaptotagmin





family, similarity: Contains 2 C2 domains., tissue specificity: Expressed in brain. Within brain, expression is highest in hippocampus, with substantial levels also detected in amygdala and thalamus.,



Western blot analysis of lysates from DU145 cells, primary antibody was diluted at 1:1000, 4° over night

