



SYT15 rabbit pAb

Cat No.:ES10333

For research use only

Overview

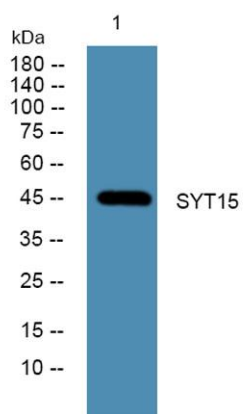
Product Name	SYT15 rabbit pAb
Host species	Rabbit
Applications	WB;ELISA
Species Cross-Reactivity	Human;Rat;Mouse
Recommended dilutions	WB 1:500-2000 ELISA 1:5000-20000
Immunogen	Synthesized peptide derived from part region of human protein
Specificity	SYT15 Polyclonal Antibody detects endogenous levels of protein.
Formulation	Liquid in PBS containing 50% glycerol, 0.5% BSA and 0.02% sodium azide.
Storage	Store at -20°C. Avoid repeated freeze-thaw cycles.
Protein Name	Synaptotagmin-15 (Chr10Syt) (Synaptotagmin XV) (SytXV)
Gene Name	SYT15
Cellular localization	[Isoform 1]: Cell membrane ; Single-pass type III membrane protein .; [Isoform 2]: Cell membrane ; Single-pass type III membrane protein .; [Isoform 4]: Cell membrane ; Single-pass type III membrane protein .
Purification	The antibody was affinity-purified from rabbit antiserum by affinity-chromatography using epitope-specific immunogen.
Clonality	Polyclonal
Concentration	1 mg/ml
Observed band	46kD
Human Gene ID	83849
Human Swiss-Prot Number	Q9BQS2
Alternative Names	
Background	synaptotagmin 15(SYT15) Homo sapiens This gene encodes a member of the Synaptotagmin (Syt) family of membrane trafficking proteins. Members of this family contain a transmembrane region and a





ELK Biotechnology

C-terminal-type tandem C2 domain. Unlike related family members, the encoded protein may be involved in membrane trafficking in non-neuronal tissues. Two transcript variants encoding distinct isoforms have been identified for this gene. [provided by RefSeq, Jul 2008],



Western blot analysis of lysates from SH-SY5Y cells, primary antibody was diluted at 1:1000, 4° over night



+86-27-59760950

ELKbio@ELKbiotech.com

www.elkbiotech.com

23-2, No.388 Gaoxin 2nd Road, Wuhan East Lake Hi-tech Development Zone, Hubei, P.R.C