



GEMI2 rabbit pAb

Cat No.:ES10326

For research use only

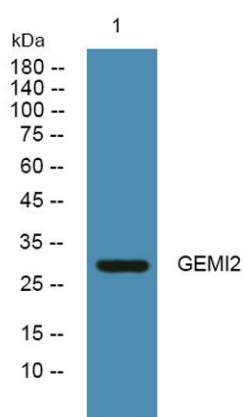
Overview

Product Name	GEMI2 rabbit pAb
Host species	Rabbit
Applications	WB;ELISA
Species Cross-Reactivity	Human;Mouse;Rat
Recommended dilutions	WB 1:500-2000 ELISA 1:5000-20000
Immunogen	Synthesized peptide derived from human protein . at AA range: 150-230
Specificity	GEMI2 Polyclonal Antibody detects endogenous levels of protein.
Formulation	Liquid in PBS containing 50% glycerol, 0.5% BSA and 0.02% sodium azide.
Storage	Store at -20°C. Avoid repeated freeze-thaw cycles.
Protein Name	Gem-associated protein 2 (Gemin-2) (Component of gems 2) (Survival of motor neuron protein-interacting protein 1) (SMN-interacting protein 1)
Gene Name	GEMIN2 SIP1
Cellular localization	Nucleus, gem. Cytoplasm. Localized in subnuclear structures next to coiled bodies, called gems, which are highly enriched in spliceosomal snRNPs. Also found in the cytoplasm.
Purification	The antibody was affinity-purified from rabbit antiserum by affinity-chromatography using epitope-specific immunogen.
Clonality	Polyclonal
Concentration	1 mg/ml
Observed band	30kD
Human Gene ID	8487
Human Swiss-Prot Number	O14893
Alternative Names	
Background	This gene encodes one of the proteins found in the SMN complex, which consists of several gemin proteins and the protein known as the survival of





motor neuron protein. The SMN complex is localized to a subnuclear compartment called gems (gemini of coiled bodies) and is required for assembly of spliceosomal snRNPs and for pre-mRNA splicing. This protein interacts directly with the survival of motor neuron protein and it is required for formation of the SMN complex. A knockout mouse targeting the mouse homolog of this gene exhibited disrupted snRNP assembly and motor neuron degeneration. [provided by RefSeq, Aug 2011],



Western blot analysis of lysates from U2OS cells, primary antibody was diluted at 1:1000, 4° over night

