



SGMR1 rabbit pAb

Cat No.:ES10259

For research use only

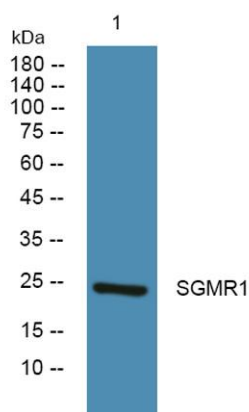
Overview

Product Name	SGMR1 rabbit pAb
Host species	Rabbit
Applications	WB;ELISA
Species Cross-Reactivity	Human;Rat;Mouse
Recommended dilutions	WB 1:500-2000 ELISA 1:5000-20000
Immunogen	Synthesized peptide derived from human protein . at AA range: 90-170
Specificity	SGMR1 Polyclonal Antibody detects endogenous levels of protein.
Formulation	Liquid in PBS containing 50% glycerol, 0.5% BSA and 0.02% sodium azide.
Storage	Store at -20°C. Avoid repeated freeze-thaw cycles.
Protein Name	Sigma non-opioid intracellular receptor 1 (Aging-associated gene 8 protein) (SR31747-binding protein) (SR-BP) (Sigma 1-type opioid receptor) (SIG-1R) (Sigma1-receptor) (Sigma1R) (hSigmaR1)
Gene Name	SIGMAR1 OPR31 SRBP AAG8
Cellular localization	Nucleus inner membrane . Nucleus outer membrane . Nucleus envelope . Cytoplasmic vesicle . Endoplasmic reticulum membrane . Membrane ; Single-pass membrane protein . Lipid droplet . Cell junction. Cell membrane . Cell projection, growth cone. Cell junctio
Purification	The antibody was affinity-purified from rabbit antiserum by affinity-chromatography using epitope-specific immunogen.
Clonality	Polyclonal
Concentration	1 mg/ml
Observed band	24kD
Human Gene ID	10280
Human Swiss-Prot Number	Q99720
Alternative Names	
Background	This gene encodes a receptor protein that interacts





with a variety of psychotomimetic drugs, including cocaine and amphetamines. The receptor is believed to play an important role in the cellular functions of various tissues associated with the endocrine, immune, and nervous systems. As indicated by its previous name, opioid receptor sigma 1 (OPRS1), the product of this gene was erroneously thought to function as an opioid receptor; it is now thought to be a non-opioid receptor. Mutations in this gene has been associated with juvenile amyotrophic lateral sclerosis 16. Alternative splicing of this gene results in transcript variants encoding distinct isoforms. [provided by RefSeq, Aug 2013],



Western blot analysis of lysates from A431 cells, primary antibody was diluted at 1:1000, 4° over night

