



SH3L2 rabbit pAb

Cat No.:ES10247

For research use only

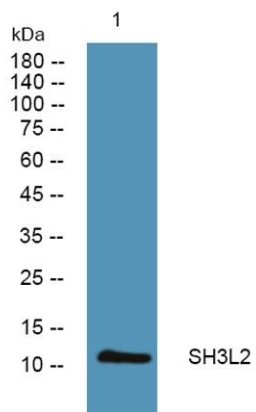
Overview

Product Name	SH3L2 rabbit pAb
Host species	Rabbit
Applications	WB;ELISA
Species Cross-Reactivity	Human;Mouse
Recommended dilutions	WB 1:500-2000 ELISA 1:5000-20000
Immunogen	Synthesized peptide derived from part region of human protein AA range: 1-50
Specificity	SH3L2 Polyclonal Antibody detects endogenous levels of protein.
Formulation	Liquid in PBS containing 50% glycerol, 0.5% BSA and 0.02% sodium azide.
Storage	Store at -20°C. Avoid repeated freeze-thaw cycles.
Protein Name	SH3 domain-binding glutamic acid-rich-like protein 2 (Fovea-associated SH3 domain-binding protein)
Gene Name	SH3BGR2 FASH3
Cellular localization	Nucleus .
Purification	The antibody was affinity-purified from rabbit antiserum by affinity-chromatography using epitope-specific immunogen.
Clonality	Polyclonal
Concentration	1 mg/ml
Observed band	11kD
Human Gene ID	83699
Human Swiss-Prot Number	Q9UJC5
Alternative Names	
Background	similarity:Belongs to the SH3BGR family.,tissue specificity:Highly expressed in brain, placenta, liver and kidney. Expressed in retina.,





ELK Biotechnology



Western blot analysis of lysates from U2OS cells, primary antibody was diluted at 1:1000, 4° over night



+86-27-59760950

ELKbio@ELKbiotech.com

www.elkbiotech.com

23-2, No.388 Gaoxin 2nd Road, Wuhan East Lake Hi-tech Development Zone, Hubei, P.R.C.