



SPA12 rabbit pAb

Cat No.:ES10231

For research use only

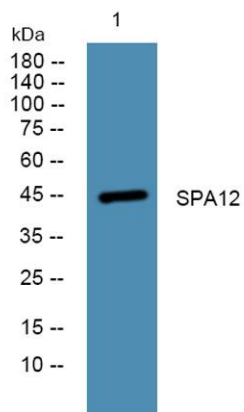
Overview

Product Name	SPA12 rabbit pAb
Host species	Rabbit
Applications	WB;ELISA
Species Cross-Reactivity	Human;Rat;Mouse
Recommended dilutions	WB 1:500-2000 ELISA 1:5000-20000
Immunogen	Synthesized peptide derived from part region of human protein
Specificity	SPA12 Polyclonal Antibody detects endogenous levels of protein.
Formulation	Liquid in PBS containing 50% glycerol, 0.5% BSA and 0.02% sodium azide.
Storage	Store at -20°C. Avoid repeated freeze-thaw cycles.
Protein Name	Serpin A12 (OL-64) (Visceral adipose tissue-derived serine protease inhibitor) (Vaspin) (Visceral adipose-specific serpin)
Gene Name	SERPINA12
Cellular localization	Secreted .
Purification	The antibody was affinity-purified from rabbit antiserum by affinity-chromatography using epitope-specific immunogen.
Clonality	Polyclonal
Concentration	1 mg/ml
Observed band	45kD
Human Gene ID	145264
Human Swiss-Prot Number	Q8IW75
Alternative Names	
Background	function:May modulates insulin action conceivably only in the presence of its yet undefined target proteases in white adipose tissues.,similarity:Belongs to the serpin family.,tissue specificity:Expressed in visceral adipose tissues.,





ELK Biotechnology



Western blot analysis of lysates from KB cells, primary antibody was diluted at 1:1000, 4° over night



+86-27-59760950

ELKbio@ELKbiotech.com

www.elkbiotech.com

23-2, No.388 Gaoxin 2nd Road, Wuhan East Lake Hi-tech Development Zone, Hubei, P.R.C