



NEK6 rabbit pAb

Cat No.:ES10209

For research use only

Overview

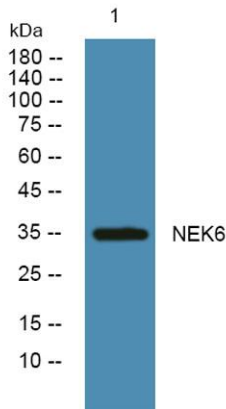
Product Name	NEK6 rabbit pAb
Host species	Rabbit
Applications	WB;ELISA
Species Cross-Reactivity	Human;Rat;Mouse
Recommended dilutions	WB 1:500-2000 ELISA 1:5000-20000
Immunogen	Synthesized peptide derived from human protein . at AA range: 90-170
Specificity	NEK6 Polyclonal Antibody detects endogenous levels of protein.
Formulation	Liquid in PBS containing 50% glycerol, 0.5% BSA and 0.02% sodium azide.
Storage	Store at -20°C. Avoid repeated freeze-thaw cycles.
Protein Name	Serine/threonine-protein kinase Nek6 (EC 2.7.11.1) (Never in mitosis A-related kinase 6) (NimA-related protein kinase 6) (Protein kinase SID6-1512)
Gene Name	NEK6
Cellular localization	Cytoplasm. Nucleus. Nucleus speckle. Cytoplasm, cytoskeleton, microtubule organizing center, centrosome. Cytoplasm, cytoskeleton, spindle pole. Colocalizes with APBB1 at the nuclear speckles. Colocalizes with PIN1 in the nucleus. Colocalizes with ATF4, CI
Purification	The antibody was affinity-purified from rabbit antiserum by affinity-chromatography using epitope-specific immunogen.
Clonality	Polyclonal
Concentration	1 mg/ml
Observed band	34kD
Human Gene ID	10783
Human Swiss-Prot Number	Q9HC98
Alternative Names	
Background	The protein encoded by this gene is a kinase required for progression through the metaphase





ELK Biotechnology

portion of mitosis. Inhibition of the encoded protein can lead to apoptosis. This protein also can enhance tumorigenesis by suppressing tumor cell senescence. Several transcript variants encoding a few different isoforms have been found for this gene. [provided by RefSeq, Oct 2011],



Western blot analysis of lysates from U2OS cells, primary antibody was diluted at 1:1000, 4° over night



+86-27-59760950

ELKbio@ELKbiotech.com

www.elkbiotech.com

23-2, No.388 Gaoxin 2nd Road, Wuhan East Lake Hi-tech Development Zone, Hubei, P.R.C