



SFRP3 rabbit pAb

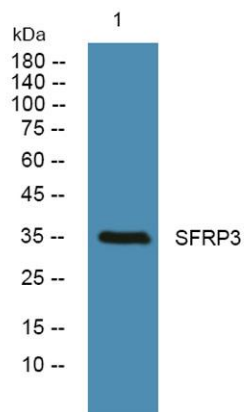
Cat No.:ES10195

For research use only

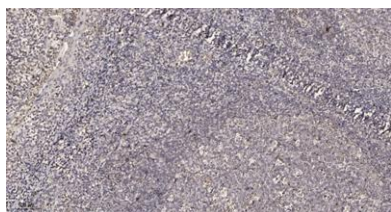
Overview

Product Name	SFRP3 rabbit pAb
Host species	Rabbit
Applications	WB;IHC;IF;ELISA
Species Cross-Reactivity	Human;Mouse
Recommended dilutions	Western Blot: 1/500 - 1/2000. Immunohistochemistry: 1/100 - 1/300. ELISA: 1/40000. Not yet tested in other applications.
Immunogen	Synthesized peptide derived from human protein . at AA range: 150-230
Specificity	SFRP3 Polyclonal Antibody detects endogenous levels of protein.
Formulation	Liquid in PBS containing 50% glycerol, 0.5% BSA and 0.02% sodium azide.
Storage	Store at -20°C. Avoid repeated freeze-thaw cycles.
Protein Name	Secreted frizzled-related protein 3 (sFRP-3) (Frezzed) (Fritz) (Frizzled-related protein 1) (FrzB-1)
Gene Name	FRZB FIZ FRE FRP FRZB1 SFRP3
Cellular localization	Secreted .
Purification	The antibody was affinity-purified from rabbit antiserum by affinity-chromatography using epitope-specific immunogen.
Clonality	Polyclonal
Concentration	1 mg/ml
Observed band	35kD
Human Gene ID	2487
Human Swiss-Prot Number	Q92765
Alternative Names	
Background	The protein encoded by this gene is a secreted protein that is involved in the regulation of bone development. Defects in this gene are a cause of female-specific osteoarthritis (OA) susceptibility. [provided by RefSeq, Apr 2010],





Western blot analysis of lysates from K562 cells, primary antibody was diluted at 1:1000, 4° over night



Immunohistochemical analysis of paraffin-embedded human tonsil. 1, Antibody was diluted at 1:200(4° overnight). 2, Tris-EDTA, pH9.0 was used for antigen retrieval. 3, Secondary antibody was diluted at 1:200(room temperature, 30min).

