



## RPF1 rabbit pAb

Cat No.:ES10184

For research use only

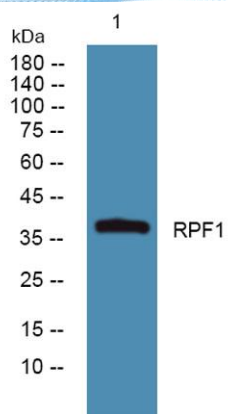
### Overview

---

<b>Product Name</b>	RPF1 rabbit pAb
<b>Host species</b>	Rabbit
<b>Applications</b>	WB;ELISA
<b>Species Cross-Reactivity</b>	Human;Rat;Mouse
<b>Recommended dilutions</b>	WB 1:500-2000 ELISA 1:5000-20000
<b>Immunogen</b>	Synthesized peptide derived from human protein . at AA range: 180-260
<b>Specificity</b>	RPF1 Polyclonal Antibody detects endogenous levels of protein.
<b>Formulation</b>	Liquid in PBS containing 50% glycerol, 0.5% BSA and 0.02% sodium azide.
<b>Storage</b>	Store at -20°C. Avoid repeated freeze-thaw cycles.
<b>Protein Name</b>	Ribosome production factor 1 (Brix domain-containing protein 5) (Ribosome biogenesis protein RPF1)
<b>Gene Name</b>	RPF1 BXDC5
<b>Cellular localization</b>	Nucleus, nucleolus .
<b>Purification</b>	The antibody was affinity-purified from rabbit antiserum by affinity-chromatography using epitope-specific immunogen.
<b>Clonality</b>	Polyclonal
<b>Concentration</b>	1 mg/ml
<b>Observed band</b>	38kD
<b>Human Gene ID</b>	80135
<b>Human Swiss-Prot Number</b>	Q9H9Y2
<b>Alternative Names</b>	
<b>Background</b>	function:May be required for ribosome biogenesis.,similarity:Contains 1 Brix domain.,



**ELK Biotechnology**



Western blot analysis of lysates from DU145 cells, primary antibody was diluted at 1:1000, 4° over night