



## RND2 rabbit pAb

Cat No.:ES10176

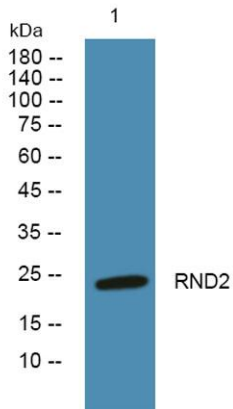
For research use only

### Overview

<b>Product Name</b>	RND2 rabbit pAb
<b>Host species</b>	Rabbit
<b>Applications</b>	WB;ELISA
<b>Species Cross-Reactivity</b>	Human;Mouse
<b>Recommended dilutions</b>	WB 1:500-2000 ELISA 1:5000-20000
<b>Immunogen</b>	Synthesized peptide derived from human protein . at AA range: 140-220
<b>Specificity</b>	RND2 Polyclonal Antibody detects endogenous levels of protein.
<b>Formulation</b>	Liquid in PBS containing 50% glycerol, 0.5% BSA and 0.02% sodium azide.
<b>Storage</b>	Store at -20°C. Avoid repeated freeze-thaw cycles.
<b>Protein Name</b>	Rho-related GTP-binding protein RhoN (Rho family GTPase 2) (Rho-related GTP-binding protein Rho7) (Rnd2)
<b>Gene Name</b>	RND2 ARHN RHO7
<b>Cellular localization</b>	Cytoplasmic vesicle, secretory vesicle, acrosome membrane ; Lipid-anchor ; Cytoplasmic side . Colocalizes with RACGAP1 in Golgi-derived proacrosomal vesicles and the acrosome. .
<b>Purification</b>	The antibody was affinity-purified from rabbit antiserum by affinity-chromatography using epitope-specific immunogen.
<b>Clonality</b>	Polyclonal
<b>Concentration</b>	1 mg/ml
<b>Observed band</b>	24kD
<b>Human Gene ID</b>	8153
<b>Human Swiss-Prot Number</b>	P52198
<b>Alternative Names</b>	
<b>Background</b>	This gene encodes a member of the Rho GTPase family, whose members play a key role in the regulation of actin cytoskeleton organization in response to extracellular growth factors. This



particular family member has been implicated in the regulation of neuronal morphology and endosomal trafficking. The gene localizes to chromosome 17 and is the centromeric neighbor of the breast-ovarian cancer susceptibility gene BRCA1. [provided by RefSeq, Jul 2008],



Western blot analysis of lysates from Jarkat cells, primary antibody was diluted at 1:1000, 4° over night