



RND1 rabbit pAb

Cat No.:ES10172

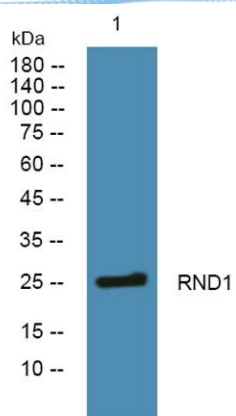
For research use only

Overview

| | |
|---------------------------------|--|
| Product Name | RND1 rabbit pAb |
| Host species | Rabbit |
| Applications | WB;ELISA |
| Species Cross-Reactivity | Human;Mouse |
| Recommended dilutions | WB 1:500-2000 ELISA 1:5000-20000 |
| Immunogen | Synthesized peptide derived from human protein . at AA range: 140-220 |
| Specificity | RND1 Polyclonal Antibody detects endogenous levels of protein. |
| Formulation | Liquid in PBS containing 50% glycerol, 0.5% BSA and 0.02% sodium azide. |
| Storage | Store at -20°C. Avoid repeated freeze-thaw cycles. |
| Protein Name | Rho-related GTP-binding protein Rho6 (Rho family GTPase 1) (Rnd1) |
| Gene Name | RND1 RHO6 |
| Cellular localization | Cell membrane ; Lipid-anchor ; Cytoplasmic side . Cytoplasm, cytoskeleton . |
| Purification | The antibody was affinity-purified from rabbit antiserum by affinity-chromatography using epitope-specific immunogen. |
| Clonality | Polyclonal |
| Concentration | 1 mg/ml |
| Observed band | 25kD |
| Human Gene ID | 27289 |
| Human Swiss-Prot Number | Q92730 |
| Alternative Names | |
| Background | This gene encodes a protein that belongs to the Rho GTPase family. Members of this family regulate the organization of the actin cytoskeleton in response to extracellular growth factors. A similar protein in rat interacts with a microtubule regulator to control axon extension. [provided by RefSeq, Apr 2014], |



ELK Biotechnology



Western blot analysis of lysates from SH-SY5Y cells,
primary antibody was diluted at 1:1000, 4° over night