

ARHG4 rabbit pAb

Cat No.:ES10169

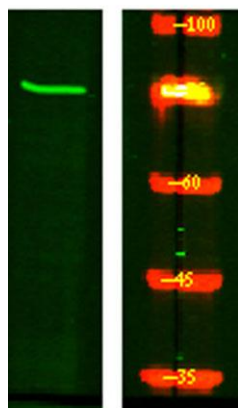
For research use only

Overview

Product Name	ARHG4 rabbit pAb
Host species	Rabbit
Applications	WB;ELISA
Species Cross-Reactivity	Human;Mouse
Recommended dilutions	WB 1:500-2000 ELISA 1:5000-20000
Immunogen	Synthesized peptide derived from human protein . at AA range: 270-350
Specificity	ARHG4 Polyclonal Antibody detects endogenous levels of protein.
Formulation	Liquid in PBS containing 50% glycerol, 0.5% BSA and 0.02% sodium azide.
Storage	Store at -20°C. Avoid repeated freeze-thaw cycles.
Protein Name	Rho guanine nucleotide exchange factor 4 (APC-stimulated guanine nucleotide exchange factor 1) (Asef) (Asef1)
Gene Name	ARHGEF4 KIAA1112
Cellular localization	[Isoform 3]: Cytoplasm. Cell projection, ruffle membrane ; Peripheral membrane protein ; Cytoplasmic side . Associated with membrane ruffles. .
Purification	The antibody was affinity-purified from rabbit antiserum by affinity-chromatography using epitope-specific immunogen.
Clonality	Polyclonal
Concentration	1 mg/ml
Observed band	75kD
Human Gene ID	50649
Human Swiss-Prot Number	Q9NR80
Alternative Names	
Background	Rho GTPases play a fundamental role in numerous cellular processes that are initiated by extracellular stimuli that work through G protein coupled receptors. The protein encoded by this gene may



form complex with G proteins and stimulate Rho-dependent signals. Multiple alternatively spliced transcript variants encoding different isoforms have been found, but the full-length nature of some variants has not been determined. [provided by RefSeq, Jun 2013],



Western Blot analysis of HEK293 lysis, using primary antibody at 1:1000 dilution. Secondary antibody(catalog#:RS23920) was diluted at 1:10000