



## RGS21 rabbit pAb

Cat No.:ES10149

For research use only

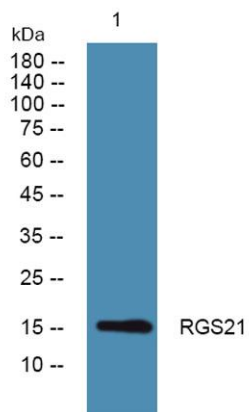
### Overview

---

<b>Product Name</b>	RGS21 rabbit pAb
<b>Host species</b>	Rabbit
<b>Applications</b>	WB;ELISA
<b>Species Cross-Reactivity</b>	Human;Rat;Mouse;
<b>Recommended dilutions</b>	WB 1:500-2000 ELISA 1:5000-20000
<b>Immunogen</b>	Synthesized peptide derived from human protein . at AA range: 10-90
<b>Specificity</b>	RGS21 Polyclonal Antibody detects endogenous levels of protein.
<b>Formulation</b>	Liquid in PBS containing 50% glycerol, 0.5% BSA and 0.02% sodium azide.
<b>Storage</b>	Store at -20°C. Avoid repeated freeze-thaw cycles.
<b>Protein Name</b>	Regulator of G-protein signaling 21 (RGS21)
<b>Gene Name</b>	RGS21
<b>Cellular localization</b>	cytoplasm,plasma membrane,
<b>Purification</b>	The antibody was affinity-purified from rabbit antiserum by affinity-chromatography using epitope-specific immunogen.
<b>Clonality</b>	Polyclonal
<b>Concentration</b>	1 mg/ml
<b>Observed band</b>	16kD
<b>Human Gene ID</b>	431704
<b>Human Swiss-Prot Number</b>	Q2M5E4
<b>Alternative Names</b>	
<b>Background</b>	Regulator of G protein signaling (RGS) proteins are regulatory and structural components of G protein-coupled receptor complexes. RGS proteins are GTPase-activating proteins for Gi (see GNAI1; MIM 139310) and Gq (see GNAQ; MIM 600998) class G-alpha proteins. They accelerate transit through the cycle of GTP binding and hydrolysis and thereby accelerate signaling kinetics and termination.[supplied by OMIM, Nov 2008],



**ELK Biotechnology**



Western blot analysis of lysates from HCT116 cells,  
primary antibody was diluted at 1:1000, 4° over night