



RAC3 rabbit pAb

Cat No.:ES10109

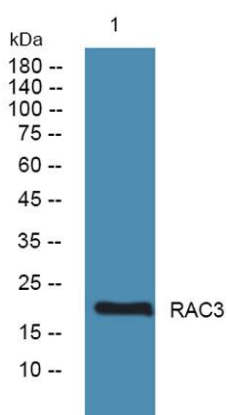
For research use only

Overview

Product Name	RAC3 rabbit pAb
Host species	Rabbit
Applications	WB;ELISA
Species Cross-Reactivity	Human;Mouse
Recommended dilutions	WB 1:500-2000 ELISA 1:5000-20000
Immunogen	Synthesized peptide derived from human protein . at AA range: 80-160
Specificity	RAC3 Polyclonal Antibody detects endogenous levels of protein.
Formulation	Liquid in PBS containing 50% glycerol, 0.5% BSA and 0.02% sodium azide.
Storage	Store at -20°C. Avoid repeated freeze-thaw cycles.
Protein Name	Ras-related C3 botulinum toxin substrate 3 (p21-Rac3)
Gene Name	RAC3
Cellular localization	Cytoplasm. Endomembrane system. Cell projection, lamellipodium. Cytoplasm, perinuclear region. Cell membrane. Cytoplasm, cytoskeleton. Membrane-associated when activated. Colocalizes with NRBP to endomembranes and at the cell periphery in lamellipodia. Co
Purification	The antibody was affinity-purified from rabbit antiserum by affinity-chromatography using epitope-specific immunogen.
Clonality	Polyclonal
Concentration	1 mg/ml
Observed band	21kD
Human Gene ID	5881
Human Swiss-Prot Number	P60763
Alternative Names	
Background	The protein encoded by this gene is a GTPase which belongs to the RAS superfamily of small GTP-binding proteins. Members of this superfamily appear to



regulate a diverse array of cellular events, including the control of cell growth, cytoskeletal reorganization, and the activation of protein kinases. Alternative splicing results in multiple transcript variants. [provided by RefSeq, Oct 2015],



Western blot analysis of lysates from A431 cells, primary antibody was diluted at 1:1000, 4° over night