



RAIN rabbit pAb

Cat No.:ES10107

For research use only

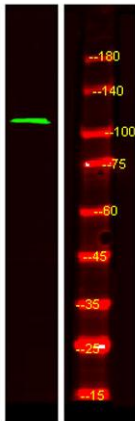
Overview

Product Name	RAIN rabbit pAb
Host species	Rabbit
Applications	WB;ELISA
Species Cross-Reactivity	Human;Rat;Mouse;
Recommended dilutions	WB 1:500-2000 ELISA 1:5000-20000
Immunogen	Synthesized peptide derived from human protein . at AA range: 620-700
Specificity	RAIN Polyclonal Antibody detects endogenous levels of protein.
Formulation	Liquid in PBS containing 50% glycerol, 0.5% BSA and 0.02% sodium azide.
Storage	Store at -20°C. Avoid repeated freeze-thaw cycles.
Protein Name	Ras-interacting protein 1 (Rain)
Gene Name	RASIP1
Cellular localization	Cytoplasm, perinuclear region . Golgi apparatus, Golgi stack . Associated with perinuclear vesicles. Is recruited to Golgi stacks by activated HRAS.
Purification	The antibody was affinity-purified from rabbit antiserum by affinity-chromatography using epitope-specific immunogen.
Clonality	Polyclonal
Concentration	1 mg/ml
Observed band	105kD
Human Gene ID	54922
Human Swiss-Prot Number	Q5U651
Alternative Names	
Background	function:May act as effector for Golgi-bound HRAS and other Ras-like proteins. May promote HRAS-mediated transformation.,similarity:Contains 1 dilute domain.,similarity:Contains 1 Ras-associating domain.,subcellular location:Associated with perinuclear vesicles. Is recruited to Golgi stacks by activated



ELK Biotechnology

HRAS.,subunit:Interacts with Ras family members that have been activated by GTP binding. Interacts with HRAS, RAP1A, RAP2, RRAS, RAF1 and RRAS2.,tissue specificity:Highly expressed in heart. Detected at lower levels in placenta and pancreas.,



Western Blot analysis of HeLa lysis, using primary antibody at 1:1000 dilution. Secondary antibody(catalog#:RS23920) was diluted at 1:10000