



RSPH1 rabbit pAb

Cat No.:ES10085

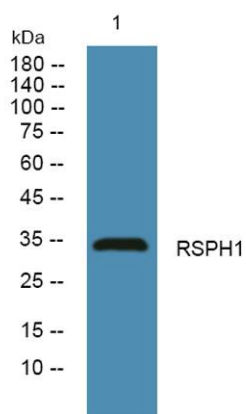
For research use only

Overview

| | |
|---------------------------------|--|
| Product Name | RSPH1 rabbit pAb |
| Host species | Rabbit |
| Applications | WB;ELISA |
| Species Cross-Reactivity | Human;Mouse |
| Recommended dilutions | WB 1:500-2000 ELISA 1:5000-20000 |
| Immunogen | Synthesized peptide derived from human protein . at AA range: 50-130 |
| Specificity | RSPH1 Polyclonal Antibody detects endogenous levels of protein. |
| Formulation | Liquid in PBS containing 50% glycerol, 0.5% BSA and 0.02% sodium azide. |
| Storage | Store at -20°C. Avoid repeated freeze-thaw cycles. |
| Protein Name | Radial spoke head 1 homolog (Cancer/testis antigen 79) (CT79) (Male meiotic metaphase chromosome-associated acidic protein) (Meichroacidin) (Testis-specific gene A2 protein) |
| Gene Name | RSPH1 TSA2 TSGA2 |
| Cellular localization | Cytoplasm . Cell projection, cilium . Cytoplasmic in late spermatocytes, secondary spermatocytes and round spermatids. Gathered around metaphase chromosomes during meiotic divisions (By similarity). . |
| Purification | The antibody was affinity-purified from rabbit antiserum by affinity-chromatography using epitope-specific immunogen. |
| Clonality | Polyclonal |
| Concentration | 1 mg/ml |
| Observed band | 33kD |
| Human Gene ID | 89765 |
| Human Swiss-Prot Number | Q8WYR4 |
| Alternative Names | |
| Background | This gene encodes a male meiotic metaphase chromosome-associated acidic protein. This gene is |



expressed in tissues with motile cilia or flagella, including the trachea, lungs, airway brushings, and testes. Mutations in this gene result in primary ciliary dyskinesia-24. Alternatively spliced transcript variants encoding different isoforms have been found for this gene. [provided by RefSeq, Sep 2014],



Western blot analysis of lysates from U2OS cells, primary antibody was diluted at 1:1000, 4° over night