



## R51A1 rabbit pAb

Cat No.:ES10084

For research use only

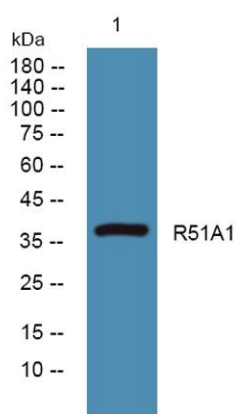
### Overview

---

<b>Product Name</b>	R51A1 rabbit pAb
<b>Host species</b>	Rabbit
<b>Applications</b>	WB;ELISA
<b>Species Cross-Reactivity</b>	Human;Mouse;
<b>Recommended dilutions</b>	WB 1:500-2000 ELISA 1:5000-20000
<b>Immunogen</b>	Synthesized peptide derived from human protein . at AA range: 90-170
<b>Specificity</b>	R51A1 Polyclonal Antibody detects endogenous levels of protein.
<b>Formulation</b>	Liquid in PBS containing 50% glycerol, 0.5% BSA and 0.02% sodium azide.
<b>Storage</b>	Store at -20°C. Avoid repeated freeze-thaw cycles.
<b>Protein Name</b>	RAD51-associated protein 1 (RAD51-interacting protein)
<b>Gene Name</b>	RAD51AP1 PIR51
<b>Cellular localization</b>	Chromosome . Nucleus . Chromosome, telomere . Colocalizes with RAD51 to multiple nuclear foci (By similarity). Colocalizes with DMC1 on meiotic chromatin (By similarity). .
<b>Purification</b>	The antibody was affinity-purified from rabbit antiserum by affinity-chromatography using epitope-specific immunogen.
<b>Clonality</b>	Polyclonal
<b>Concentration</b>	1 mg/ml
<b>Observed band</b>	38kD
<b>Human Gene ID</b>	10635
<b>Human Swiss-Prot Number</b>	Q96B01
<b>Alternative Names</b>	
<b>Background</b>	alternative products:Additional isoforms seem to exist,function:May participate in a common DNA damage response pathway associated with the activation of homologous recombination and double-strand break repair. Binds to single and



double stranded DNA, and is capable of aggregating DNA. Also binds RNA.,PTM:Phosphorylated upon DNA damage, probably by ATM or ATR.,subcellular location:Colocalizes with RAD51 to multiple nuclear foci.,subunit:Isoform 2 interacts with RAD51.,tissue specificity:Highly expressed in testis and thymus. Lower levels in colon and small intestine. Little or no expression in spleen, prostate, ovary and peripheral blood leukocytes.,



Western blot analysis of lysates from PC12 cells, primary antibody was diluted at 1:1000, 4° over night