



RILP rabbit pAb

Cat No.:ES10081

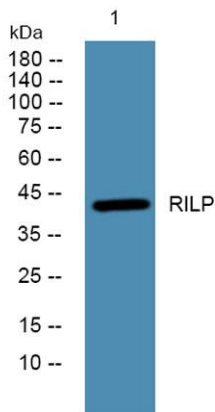
For research use only

Overview

Product Name	RILP rabbit pAb
Host species	Rabbit
Applications	WB;ELISA
Species Cross-Reactivity	Human;Mouse
Recommended dilutions	WB 1:500-2000 ELISA 1:5000-20000
Immunogen	Synthesized peptide derived from human protein . at AA range: 70-150
Specificity	RILP Polyclonal Antibody detects endogenous levels of protein.
Formulation	Liquid in PBS containing 50% glycerol, 0.5% BSA and 0.02% sodium azide.
Storage	Store at -20°C. Avoid repeated freeze-thaw cycles.
Protein Name	Rab-interacting lysosomal protein
Gene Name	RILP PP10141
Cellular localization	Late endosome membrane . Lysosome membrane . Cytoplasmic vesicle, phagosome membrane . Associated with late endosomal, lysosomal and phagosomal membranes. The interaction with RAB7A is necessary for its recruitment to phagosomes. .
Purification	The antibody was affinity-purified from rabbit antiserum by affinity-chromatography using epitope-specific immunogen.
Clonality	Polyclonal
Concentration	1 mg/ml
Observed band	44kD
Human Gene ID	83547
Human Swiss-Prot Number	Q96NA2
Alternative Names	
Background	Rab interacting lysosomal protein(RILP) Homo sapiens This gene encodes a lysosomal protein that interacts with RAB7, a small GTPase that controls transport to endocytic degradative



compartments. Studies using mutant forms of the two proteins suggest that this protein represents a downstream effector for RAB7, and both proteins act together in the regulation of late endocytic traffic. A unique region of this protein has also been shown to be involved in the regulation of lysosomal morphology. [provided by RefSeq, Sep 2011],



Western blot analysis of lysates from A431 cells, primary antibody was diluted at 1:1000, 4° over night