



NSUN5 rabbit pAb

Cat No.:ES10073

For research use only

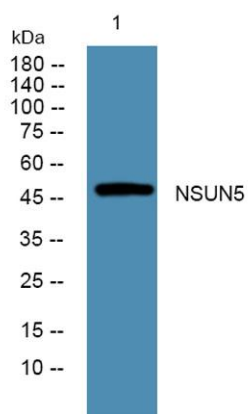
Overview

| | |
|---------------------------------|---|
| Product Name | NSUN5 rabbit pAb |
| Host species | Rabbit |
| Applications | WB;ELISA |
| Species Cross-Reactivity | Human;Mouse |
| Recommended dilutions | WB 1:500-2000 ELISA 1:5000-20000 |
| Immunogen | Synthesized peptide derived from human protein . at AA range: 320-400 |
| Specificity | NSUN5 Polyclonal Antibody detects endogenous levels of protein. |
| Formulation | Liquid in PBS containing 50% glycerol, 0.5% BSA and 0.02% sodium azide. |
| Storage | Store at -20°C. Avoid repeated freeze-thaw cycles. |
| Protein Name | Putative methyltransferase NSUN5 (EC 2.1.1.-) (NOL1-related protein) (NOL1R) (NOL1/NOP2/Sun domain family member 5) (Williams-Beuren syndrome chromosomal region 20A protein) |
| Gene Name | NSUN5 WBSCR20 WBSCR20A |
| Cellular localization | Nucleus, nucleolus . |
| Purification | The antibody was affinity-purified from rabbit antiserum by affinity-chromatography using epitope-specific immunogen. |
| Clonality | Polyclonal |
| Concentration | 1 mg/ml |
| Observed band | 47kD |
| Human Gene ID | 55695 |
| Human Swiss-Prot Number | Q96P11 |
| Alternative Names | |
| Background | This gene encodes a member of an evolutionarily conserved family of proteins that may function as methyltransferases. This gene is located in a larger region of chromosome 7 that is deleted in Williams-Beuren syndrome, a multisystem developmental disorder. There are two pseudogenes |



ELK Biotechnology

for this gene located in the same region of chromosome 7. Alternative splicing results in multiple transcript variants encoding different isoforms. [provided by RefSeq, Jul 2013],



Western blot analysis of lysates from PC12 cells, primary antibody was diluted at 1:1000, 4° over night