



SFTPD rabbit pAb

Cat No.:ES10072

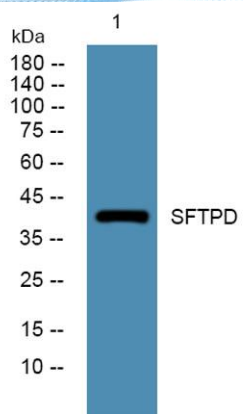
For research use only

Overview

Product Name	SFTPD rabbit pAb
Host species	Rabbit
Applications	WB;ELISA
Species Cross-Reactivity	Human;Mouse;Rat
Recommended dilutions	WB 1:500-2000 ELISA 1:5000-20000
Immunogen	Synthesized peptide derived from human protein . at AA range: 290-370
Specificity	SFTPD Polyclonal Antibody detects endogenous levels of protein.
Formulation	Liquid in PBS containing 50% glycerol, 0.5% BSA and 0.02% sodium azide.
Storage	Store at -20°C. Avoid repeated freeze-thaw cycles.
Protein Name	Pulmonary surfactant-associated protein D (PSP-D) (SP-D) (Collectin-7) (Lung surfactant protein D)
Gene Name	SFTPD COLEC7 PSPD SFTP4
Cellular localization	Secreted, extracellular space, extracellular matrix. Secreted, extracellular space, surface film.
Purification	The antibody was affinity-purified from rabbit antiserum by affinity-chromatography using epitope-specific immunogen.
Clonality	Polyclonal
Concentration	1 mg/ml
Observed band	41kD
Human Gene ID	6441
Human Swiss-Prot Number	P35247
Alternative Names	
Background	The protein encoded by this gene is part of the innate immune response, protecting the lungs against inhaled microorganisms and chemicals. The encoded protein may also be involved in surfactant metabolism. [provided by RefSeq, Jul 2015],



ELK Biotechnology



Western blot analysis of lysates from Jarkat cells, primary antibody was diluted at 1:1000, 4° over night