



# S10A2 rabbit pAb

Cat No.:ES10064

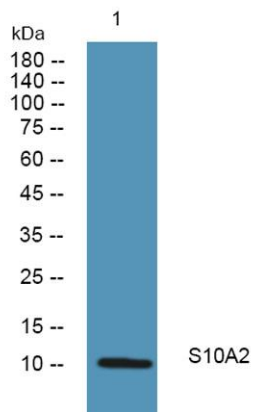
For research use only

## Overview

<b>Product Name</b>	S10A2 rabbit pAb
<b>Host species</b>	Rabbit
<b>Applications</b>	WB;ELISA
<b>Species Cross-Reactivity</b>	Human;Rat;Mouse;
<b>Recommended dilutions</b>	WB 1:500-2000 ELISA 1:5000-20000
<b>Immunogen</b>	Synthesized peptide derived from human protein . at AA range: 40-120
<b>Specificity</b>	S10A2 Polyclonal Antibody detects endogenous levels of protein.
<b>Formulation</b>	Liquid in PBS containing 50% glycerol, 0.5% BSA and 0.02% sodium azide.
<b>Storage</b>	Store at -20°C. Avoid repeated freeze-thaw cycles.
<b>Protein Name</b>	Protein S100-A2 (CAN19) (Protein S-100L) (S100 calcium-binding protein A2)
<b>Gene Name</b>	S100A2 S100L
<b>Cellular localization</b>	
<b>Purification</b>	The antibody was affinity-purified from rabbit antiserum by affinity-chromatography using epitope-specific immunogen.
<b>Clonality</b>	Polyclonal
<b>Concentration</b>	1 mg/ml
<b>Observed band</b>	10kD
<b>Human Gene ID</b>	6273
<b>Human Swiss-Prot Number</b>	P29034
<b>Alternative Names</b>	
<b>Background</b>	S100 calcium binding protein A2(S100A2) Homo sapiens The protein encoded by this gene is a member of the S100 family of proteins containing 2 EF-hand calcium-binding motifs. S100 proteins are localized in the cytoplasm and/or nucleus of a wide range of cells, and involved in the regulation of a number of cellular processes such as cell cycle progression and differentiation. S100 genes include



at least 13 members which are located as a cluster on chromosome 1q21. This protein may have a tumor suppressor function. Chromosomal rearrangements and altered expression of this gene have been implicated in breast cancer. [provided by RefSeq, Jul 2008],



Western blot analysis of lysates from SW480 cells, primary antibody was diluted at 1:1000, 4° over night