



# S10AE rabbit pAb

Cat No.:ES10063

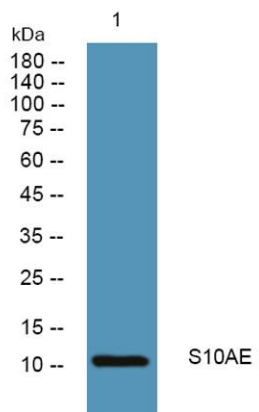
For research use only

## Overview

|                                 |   |
|---------------------------------|---|
| <b>Product Name</b>             | S10AE rabbit pAb  |
| <b>Host species</b>             | Rabbit  |
| <b>Applications</b>             | WB;ELISA  |
| <b>Species Cross-Reactivity</b> | Human;Mouse   |
| <b>Recommended dilutions</b>    | WB 1:500-2000 ELISA 1:5000-20000  |
| <b>Immunogen</b>                | Synthesized peptide derived from human protein .<br>at AA range: 30-110   |
| <b>Specificity</b>              | S10AE Polyclonal Antibody detects endogenous<br>levels of protein.  |
| <b>Formulation</b>              | Liquid in PBS containing 50% glycerol, 0.5% BSA and<br>0.02% sodium azide.  |
| <b>Storage</b>                  | Store at -20°C. Avoid repeated freeze-thaw cycles.  |
| <b>Protein Name</b>             | Protein S100-A14 (S100 calcium-binding protein<br>A14) (S114)   |
| <b>Gene Name</b>                | S100A14 S100A15   |
| <b>Cellular localization</b>    | Cytoplasm .   |
| <b>Purification</b>             | The antibody was affinity-purified from rabbit<br>antiserum by affinity-chromatography using<br>epitope-specific immunogen.   |
| <b>Clonality</b>                | Polyclonal  |
| <b>Concentration</b>            | 1 mg/ml   |
| <b>Observed band</b>            | 11kD  |
| <b>Human Gene ID</b>            | 57402   |
| <b>Human Swiss-Prot Number</b>  | Q9HCY8  |
| <b>Alternative Names</b>        |   |
| <b>Background</b>               | This gene encodes a member of the S100 protein<br>family which contains an EF-hand motif and binds<br>calcium. The gene is located in a cluster of S100<br>genes on chromosome 1. Levels of the encoded<br>protein have been found to be lower in cancerous<br>tissue and associated with metastasis suggesting a<br>tumor suppressor function (PMID: 19956863,<br>19351828). [provided by RefSeq, Dec 2011], |



**ELK Biotechnology**



Western blot analysis of lysates from DU145 cells, primary antibody was diluted at 1:1000, 4° over night