



# IPP2L rabbit pAb

Cat No.:ES10060

For research use only

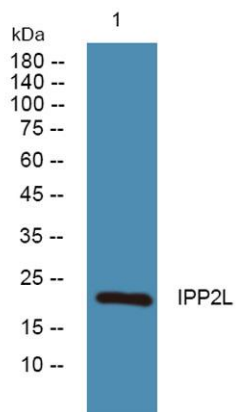
## Overview

---

<b>Product Name</b>	IPP2L rabbit pAb
<b>Host species</b>	Rabbit
<b>Applications</b>	WB;ELISA
<b>Species Cross-Reactivity</b>	Human;Rat;Mouse;
<b>Recommended dilutions</b>	WB 1:500-2000 ELISA 1:5000-20000
<b>Immunogen</b>	Synthesized peptide derived from human protein . at AA range: 130-210
<b>Specificity</b>	IPP2L Polyclonal Antibody detects endogenous levels of protein.
<b>Formulation</b>	Liquid in PBS containing 50% glycerol, 0.5% BSA and 0.02% sodium azide.
<b>Storage</b>	Store at -20°C. Avoid repeated freeze-thaw cycles.
<b>Protein Name</b>	Putative protein phosphatase inhibitor 2-like protein 1 (Protein phosphatase 1, regulatory subunit 2 pseudogene 1)
<b>Gene Name</b>	PPP1R2P1
<b>Cellular localization</b>	protein phosphatase type 1 complex,
<b>Purification</b>	The antibody was affinity-purified from rabbit antiserum by affinity-chromatography using epitope-specific immunogen.
<b>Clonality</b>	Polyclonal
<b>Concentration</b>	1 mg/ml
<b>Observed band</b>	22kD
<b>Human Gene ID</b>	
<b>Human Swiss-Prot Number</b>	Q96PQ5
<b>Alternative Names</b>	
<b>Background</b>	PPP1R2P1 (Protein Phosphatase 1 Regulatory Inhibitor Subunit 2 Pseudogene 1) is a Pseudogene. GO annotations related to this gene include protein phosphatase inhibitor activity. Inhibitor of protein-phosphatase 1.



**ELK Biotechnology**



Western blot analysis of lysates from HCT116 cells,  
primary antibody was diluted at 1:1000, 4° over night