



PPM1E rabbit pAb

Cat No.:ES10057

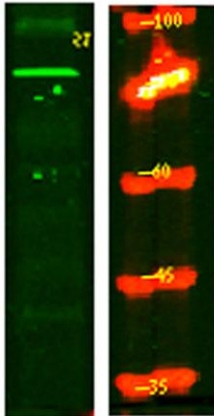
For research use only

Overview

Product Name	PPM1E rabbit pAb
Host species	Rabbit
Applications	WB;ELISA
Species Cross-Reactivity	Human;Mouse;Rat
Recommended dilutions	WB 1:500-2000 ELISA 1:5000-20000
Immunogen	Synthesized peptide derived from human protein . at AA range: 460-540
Specificity	PPM1E Polyclonal Antibody detects endogenous levels of protein.
Formulation	Liquid in PBS containing 50% glycerol, 0.5% BSA and 0.02% sodium azide.
Storage	Store at -20°C. Avoid repeated freeze-thaw cycles.
Protein Name	Protein phosphatase 1E (EC 3.1.3.16) (Ca ²⁺)/calmodulin-dependent protein kinase phosphatase N) (CaMKP-N) (CaMKP-nucleus) (CaMKN) (Partner of PIX 1) (Partner of PIX-alpha) (Partner of PIXA)
Gene Name	PPM1E CAMKN KIAA1072 POPX1
Cellular localization	Nucleus . Cytoplasm . A truncated form, major form, with the C-terminal part missing, is mostly found in the cytoplasm and a little in the nucleus. The full-length, minor form, is found in the nucleus. .
Purification	The antibody was affinity-purified from rabbit antiserum by affinity-chromatography using epitope-specific immunogen.
Clonality	Polyclonal
Concentration	1 mg/ml
Observed band	84kD
Human Gene ID	
Human Swiss-Prot Number	Q8WY54
Alternative Names	
Background	This gene encodes a member of the PPM family of serine/threonine-protein phosphatases. The



encoded protein is localized to the nucleus and dephosphorylates and inactivates multiple substrates including serine/threonine-protein kinase PAK 1, 5'-AMP-activated protein kinase (AMPK) and the multifunctional calcium/calmodulin-dependent protein kinases. Alternatively spliced transcript variants have been observed for this gene. [provided by RefSeq, May 2012],



Western Blot analysis of HeLa lysis, using primary antibody at 1:1000 dilution. Secondary antibody(catalog#:RS23920) was diluted at 1:10000