



## ATP4B rabbit pAb

Cat No.:ES10039

For research use only

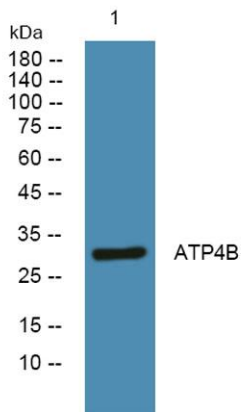
### Overview

---

<b>Product Name</b>	ATP4B rabbit pAb
<b>Host species</b>	Rabbit
<b>Applications</b>	WB;ELISA
<b>Species Cross-Reactivity</b>	Human;Rat;Mouse
<b>Recommended dilutions</b>	WB 1:500-2000 ELISA 1:5000-20000
<b>Immunogen</b>	Synthesized peptide derived from human protein . at AA range: 160-240
<b>Specificity</b>	ATP4B Polyclonal Antibody detects endogenous levels of protein.
<b>Formulation</b>	Liquid in PBS containing 50% glycerol, 0.5% BSA and 0.02% sodium azide.
<b>Storage</b>	Store at -20°C. Avoid repeated freeze-thaw cycles.
<b>Protein Name</b>	Potassium-transporting ATPase subunit beta (Gastric H(+)/K(+) ATPase subunit beta) (Proton pump beta chain)
<b>Gene Name</b>	ATP4B
<b>Cellular localization</b>	Apical cell membrane ; Single-pass type II membrane protein . Cell membrane ; Single-pass type II membrane protein . Localized in the apical canalicular membrane of parietal cells. .
<b>Purification</b>	The antibody was affinity-purified from rabbit antiserum by affinity-chromatography using epitope-specific immunogen.
<b>Clonality</b>	Polyclonal
<b>Concentration</b>	1 mg/ml
<b>Observed band</b>	32kD
<b>Human Gene ID</b>	496
<b>Human Swiss-Prot Number</b>	P51164
<b>Alternative Names</b>	
<b>Background</b>	The protein encoded by this gene belongs to a family of P-type cation-transporting ATPases. The gastric H <sup>+</sup> , K <sup>+</sup> -ATPase is a heterodimer consisting of a high molecular weight catalytic alpha subunit and



a smaller but heavily glycosylated beta subunit. This enzyme is a proton pump that catalyzes the hydrolysis of ATP coupled with the exchange of H(+) and K(+) ions across the plasma membrane. It is also responsible for gastric acid secretion. This gene encodes the beta subunit of the gastric H+, K+-ATPase. [provided by RefSeq, Jul 2008],



Western blot analysis of lysates from PC12 cells, primary antibody was diluted at 1:1000, 4° over night