



PLS3 rabbit pAb

Cat No.:ES10004

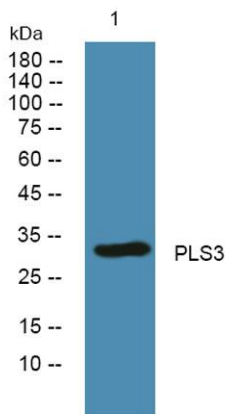
For research use only

Overview

Product Name	PLS3 rabbit pAb
Host species	Rabbit
Applications	WB;ELISA
Species Cross-Reactivity	Human;Rat;Mouse
Recommended dilutions	WB 1:500-2000 ELISA 1:5000-20000
Immunogen	Synthesized peptide derived from human protein . at AA range: 180-260
Specificity	PLS3 Polyclonal Antibody detects endogenous levels of protein.
Formulation	Liquid in PBS containing 50% glycerol, 0.5% BSA and 0.02% sodium azide.
Storage	Store at -20°C. Avoid repeated freeze-thaw cycles.
Protein Name	Phospholipid scramblase 3 (PL scramblase 3) (Ca ²⁺)-dependent phospholipid scramblase 3)
Gene Name	PLSCR3
Cellular localization	Mitochondrion membrane ; Single-pass type II membrane protein . Mitochondrion inner membrane ; Single-pass type II membrane protein . Nucleus . Palmitoylation regulates its localization to the cell membrane or the nucleus; trafficking to the cell membrane
Purification	The antibody was affinity-purified from rabbit antiserum by affinity-chromatography using epitope-specific immunogen.
Clonality	Polyclonal
Concentration	1 mg/ml
Observed band	32kD
Human Gene ID	57048
Human Swiss-Prot Number	Q9NRY6
Alternative Names	
Background	cofactor:Calcium.,function:May mediate accelerated ATP-independent bidirectional transbilayer migration of phospholipids upon binding calcium



ions that results in a loss of phospholipid asymmetry in the plasma membrane. May play a central role in the initiation of fibrin clot formation, in the activation of mast cells and in the recognition of apoptotic and injured cells by the reticuloendothelial system.,similarity:Belongs to the phospholipid scramblase family.,tissue specificity:Expressed in heart, placenta, lung, liver, skeletal muscle, kidney, pancreas, spleen, thymus, prostate, uterus, small intestine and peripheral blood lymphocytes. Not detected in testis, brain and liver.,



Western blot analysis of lysates from SH-SY5Y cells,
primary antibody was diluted at 1:1000, 4° over night